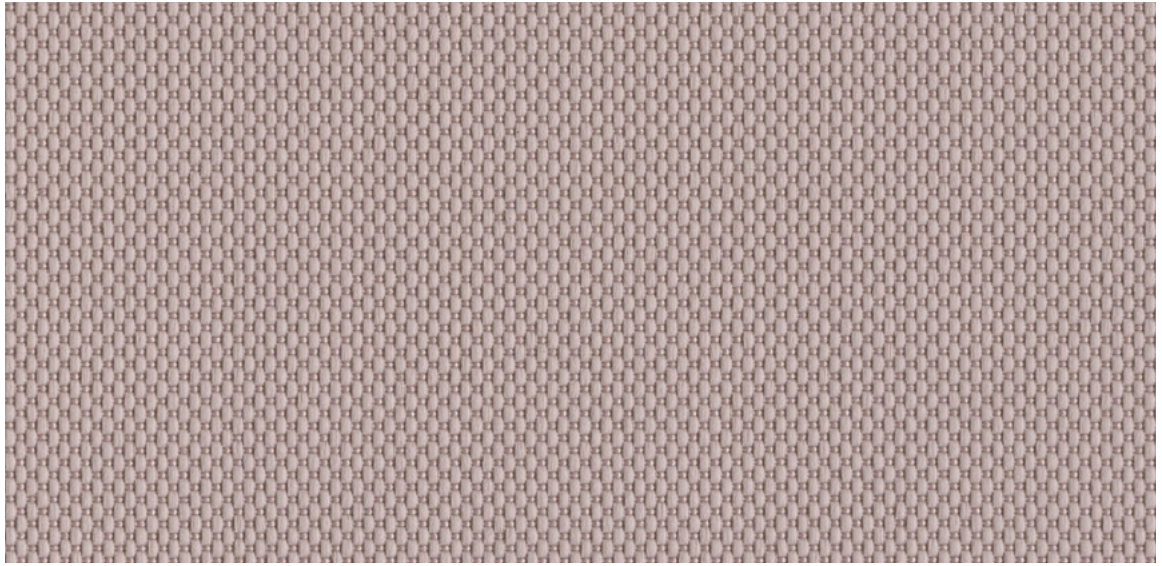
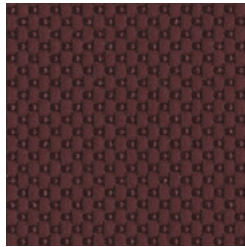


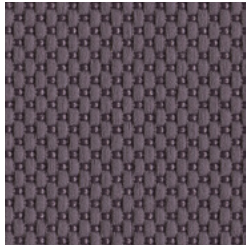
47 Nova. **Wilkhahn**



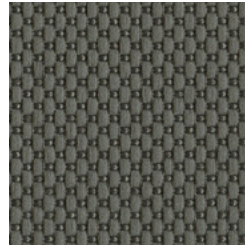
47/618



47/617



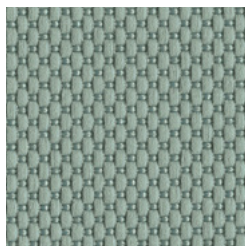
47/610



47/15



47/14

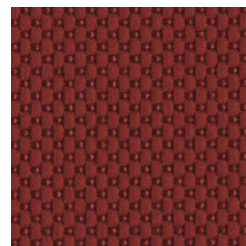


47/84

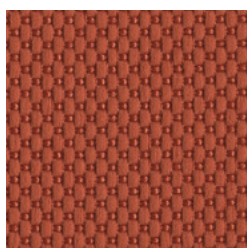


47/71

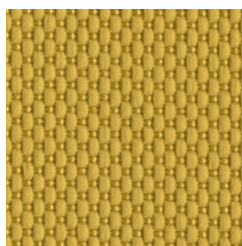
# 47 Nova.



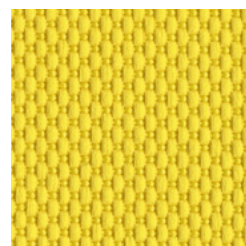
47/66



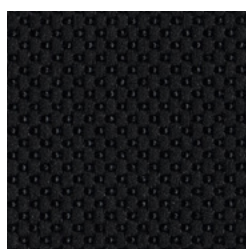
47/64



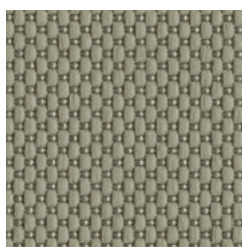
47/50



47/54



47/10



47/22

Die digitalen Muster weichen von den Originaltönen ab.  
The digital sample colours differ from the originals.  
Les échantillons numériques diffèrent du nuancier original.  
Los tonos de colores de las muestras en formato digital, varían de los originales.

**Beschreibung**

100% Polyester  
560 g/dfd. m  
Breite 140 cm

**Prüfungsergebnisse**

Scheuerfestigkeit:  
50.000 Scheuerhübe,  
BS EN ISO12947-2 (Martindale)  
Lichtechtheit:  
5, BS EN ISO  
105-B02 Methode 2  
Pilling:  
5, BS EN ISO 12945-2  
Reibecktheit:  
Trocken 4-5, Nass 4-5,  
EN ISO 105-X12  
Flammschutz:  
EN 1021-1  
EN 1021-2 (CMHR)  
Schwerentflammbarkeit hängt  
vom verwendeten Schaum ab.

**Reinigung**

Festverspannte Bezüge:  
regelmäßig absaugen,  
professionelle  
Trockenreinigung  
Abnehmbare Bezüge:

**Description**

100% Polyester  
560 g/lin. m  
width 140 cm (55")

**Test results**

Abrasion:  
50.000 rubs,  
BS EN ISO12947-2 (Martindale)  
Lightfastness:  
5, BS EN ISO  
105-B02 Method 2  
Pilling:  
5, BS EN ISO 12945-2  
Fastness to rubbing:  
dry 4-5, wet 4-5,  
EN ISO 105-X12  
Flame resistance:  
EN 1021-1  
EN 1021-2 (CMHR)  
Flame retardancy depends  
on the foam used.

**Cleaning**

Fixed covers: periodical  
vacuum cleaning,  
professional cleaning  
with dry foam  
Removable covers:

**Description**

100 % Polyester  
560 g/m  
laize 140 cm

**Résultats des tests**

Résistance à l'abrasion :  
50 000 révolutions selon,  
BS EN ISO 12947-2 (Martindale)  
Résistance à la lumière :  
5, BS EN ISO  
105-B02 méthode 2  
Boulochage :  
5, BS EN ISO 12945-2  
Résistance au frottement :  
à sec 4-5, mouillé 4-5,  
EN ISO 105-X12  
Tenue au feu :  
EN 1021-1  
EN 1021-2 (CMHR)  
L'inflammabilité dépend de la  
mousse mise en œuvre.

**Entretien**

Revêtements non  
amovibles : aspirer  
régulièrement, nettoyage  
à sec professionnel  
Revêtements amovibles :

**Descripción**

100% Poliéster  
560 g/m de 140 cm  
de ancho

**Pruebas**

Resistencia contra rozamiento:  
50.000 golpes,  
BS EN ISO12947-2 (Martindale)  
Resistencia a la luz:  
5, BS EN ISO  
105-B02 método 2  
Pilling:  
5, BS EN ISO 12945-2  
Solidez al rozamiento:  
seco 4-5, húmedo 4-5,  
EN ISO 105-X12  
Protección contra llamas:  
EN 1021-1  
EN 1021-2 (CMHR)  
La protección contra llamas  
depende de la espuma utilizada.

**Limpieza**

Tapizados fijos: aspirar  
regularmente, limpieza  
profesional en seco  
Tapizados  
intercambiables:



50842000 - BH

**Wilkhahn Germany**

Wilkening + Hahne GmbH+Co. KG, Fritz-Hahne-Straße 8, 31848 Bad Münder

**Wilkhahn worldwide**

Australia, Belgium, China, Deutschland, España, Hong Kong, Japan, Maroc, Nederland, Österreich, Polska, Schweiz, Singapore, South Africa, United Arab Emirates, United Kingdom, United States of America

wilkhahn.com