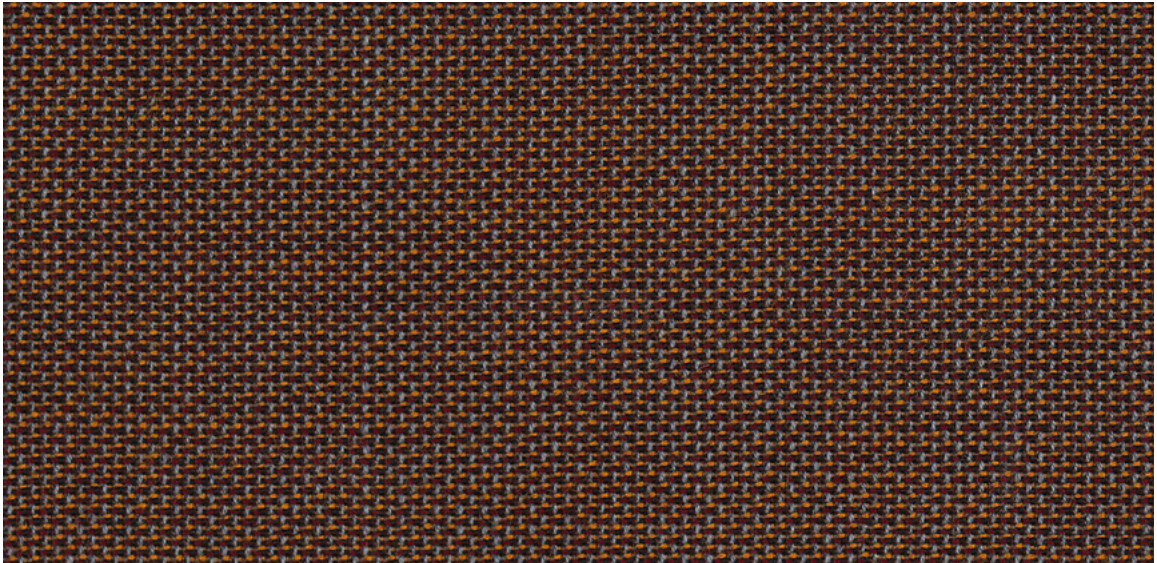
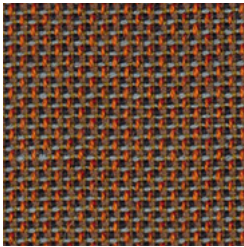


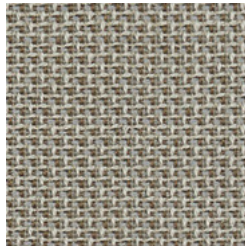
64 Morph. **Wilkhahn**



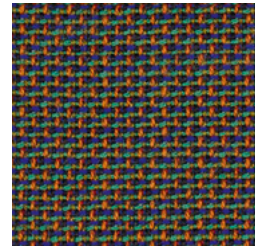
64/2103



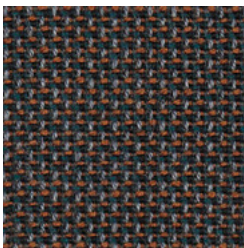
64/10101



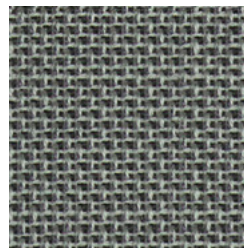
64/5101



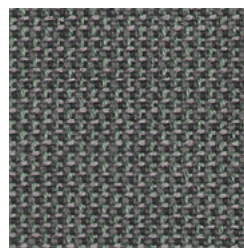
64/10103



64/2102



64/4101

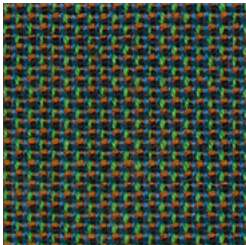


64/2101

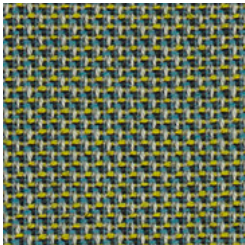


64/1101

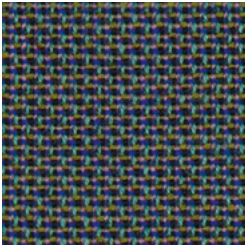
64 Morph.



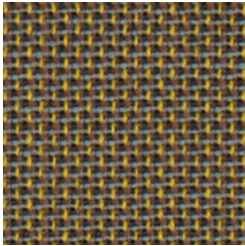
64/14101



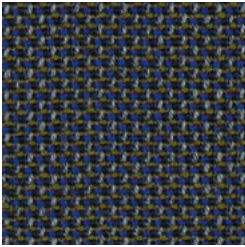
64/4102



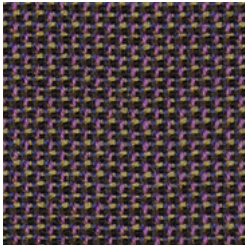
64/13101



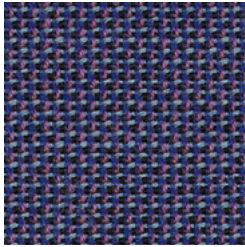
64/12102



64/2104



64/9101



64/9102

Die digitalen Muster weichen von den Originaltönen ab.
The digital sample colours differ from the originals.
Les échantillons numériques diffèrent du nuancier original.
Los tonos de colores de las muestras en formato digital, varían de los originales.

Beschreibung

85% Neuseeland Wolle
15% Polyamid
475 g/dfd. m
Breite 140 cm

Prüfungsergebnisse

Scheuerfestigkeit:
200.000 Scheuerhübe,
BS EN ISO 12947-2 (Martindale)
Lichtechtheit:
5-6, BS EN ISO 105-B02
Pilling:
4, BS EN ISO 12945-2
Reibechtheit:
Trocken 4-5, Nass 4-5
EN ISO 105-X12
Flammschutz:
BS EN 1021 1&2 Cigarette
and Match
BS 5852 Part 1 0,1 Cigarette &
match
BS 5852 Crib 5
CA TB 117-2013
Schwerentflammbarkeit hängt
vom verwendeten Schaum ab.

Reinigung

professionelle
Trockenreinigung
☒ ☒ ☒ ☒ ☒ ☒

Description

85% New Zealand wool
15% polyamide
475 g/lin. m
width 140 cm (55")

Test results

Abrasion resistance:
200,000 rubs,
BS EN ISO 12947-2 (Martindale)
Lightfastness:
5-6, BS EN ISO 105-B02
Pilling:
4, BS EN ISO 12945-2
Fastness to rubbing:
Dry 4-5, wet 4-5
EN ISO 105-X12
Flame resistance:
BS EN 1021 1&2 Cigarette
and Match
BS 5852 Part 1 0,1 Cigarette &
match
BS 5852 Crib 5
CA TB 117-2013
Flame retardancy depends on
the foam used.

Cleaning

Professional dry cleaned
☒ ☒ ☒ ☒ ☒ ☒

Description

85% laine de Nouvelle-Zélande
15% polyamide
475 g/m. l.
laize 140 cm

Résultats des tests

Résistance à l'abrasion :
200 000 révolutions,
BS EN ISO 12947-2 (Martindale)
Résistance à la lumière :
5-6, BS EN ISO 105-B02
Boulochage :
4, BS EN ISO 12945-2
Solidité au frottement :
Sec 4-5, humide 4-5
EN ISO 105-X12
Tenue au feu :
BS EN 1021 1&2 Cigarette et
allumette
BS 5852 Partie 1 0,1 Cigarette
et allumette
BS 5852 Berceau 5
CA TB 117-2013
L'inflammabilité dépend de la
mousse utilisée.

Nettoyage

Nettoyage à sec professionnel
☒ ☒ ☒ ☒ ☒ ☒

Descripción

85% lana neozelandesa
15% poliamida
475 g/lin. m
ancho: 140 cm

Pruebas

Resistencia a la abrasión:
200.000 golpes,
BS EN ISO 12947-2 (Martindale)
Resistencia a la luz:
5-6, BS EN ISO 105-B02
Pilling:
4, BS EN ISO 12945-2
Solidez al rozamiento:
Seco 4-5, húmedo 4-5
EN ISO 105-X12
Protección contra llamas:
BS EN 1021 1&2 Cigarette
and Match
BS 5852 Part 1 0,1 Cigarette &
match
BS 5852 Crib 5
CA TB 117-2013
La espuma usada determina
la capacidad de protección
contra llamas.

Limpieza

Limpieza profesional en seco
☒ ☒ ☒ ☒ ☒ ☒



DK/016/024

50822000 - BH

Wilkhahn Germany

Wilkening + Hahne GmbH+Co. KG, Fritz-Hahne-Straße 8, 31848 Bad Münder

Wilkhahn worldwide

Australia, Belgium, China, Deutschland, España, Hong Kong, Japan, Maroc, Nederland, Österreich, Polska, Schweiz, Singapore, South Africa, United Arab Emirates, United Kingdom, United States of America

wilkhahn.com