

Wilkhahn



References

Ramsing & Co | Johannes Wegmann | PEIA ASSOCIATI | insidegroup.lu | Allona Arquitectos |
Meiho Facility Works Limited | OFFCON | Outbox Studio | Obayashi Corporation | Ellwanger, ellwang
ne Design | FLOOAT, Inc. | Petzi + Petzi | Spatial Concept | Art Nivo | MMoser | Casper Schwarz Archite
Nikken Space Design Ltd. | mph architects | Interior design studio LESON GmbH | Fokkema & Partners Archi
Wackerhagen GmbH & Co. KG | Woods Bagot | Interior Lepel & Lepel | Geyer | Identi AG | Rainer Schilling | C
ON SEKKEI INC. | DWP Design with Purpose | The real estate management team at St. Gallen University | H
Constructlab | Ludwig Hilbersheimer | Ramsing & Co | Johannes Wegmann | PEIA ASSOCIATI | insidegroup.lu
mp architects. | Unispace | Meiho Facility Works Limited | OFFCON | Outbox Studio | Obayashi Corpora
ume | Vega Ortiz | Combine Design | FLOOAT, Inc. | Petzi + Petzi | Spatial Concept | Art Nivo | MMo
mp | CBRE | Nikken Sekkei Ltd., Nikken Space Design Ltd. | mph architects | Interior design studio LESON
rior Solutions | Antje Pegger for Wackerhagen GmbH & Co. KG | Woods Bagot | Interior Lepel & Lepel | Gey
ey Innenarchitektur + Design | NIHON SEKKEI INC. | DWP Design with Purpose | The real estate manag
eam | Sheppard Robson | Phillip Oswald/Constructlab | Ludwig Hilbersheimer | Ramsing & Co | Johannes
estudio arquitectos primitivo gonzález / mmp architects. | Unispace | Meiho Facility Works Limited | OFFCO
AG | Paustian | ebene03.büro für räume | Vega Ortiz | Combine Design | FLOOAT, Inc. | Petzi + Petzi
ct | brüchner-hüttemann pasch bhp | CBRE | Nikken Sekkei Ltd., Nikken Space Design Ltd. | mph architect
esellschaft mbH | Advanced Interior Solutions | Antje Pegger for Wackerhagen GmbH & Co. KG | Woods Ba
eam | Concrete Amsterdam | Axel Frey Innenarchitektur + Design | NIHON SEKKEI INC. | DWP Design with I
ty's real estate management team | Sheppard Robson | Phillip Oswald/Constructlab | Ludwig Hilbersheimer
r partners | Architecture + estudio arquitectos primitivo gonzález / mmp architects. | Unispace | Meiho
itekten ingenieure gmbh | Gehri AG | Paustian | ebene03.büro für räume | Vega Ortiz | Combine Design |
e Bruyn, two_space + product | brüchner-hüttemann pasch bhp | CBRE | Nikken Sekkei Ltd., Nikken Space D
chitekten und Planungsgesellschaft mbH | Advanced Interior Solutions | Antje Pegger for Wackerhagen GmbH
ternal design team | Concrete Amsterdam | Axel Frey Innenarchitektur + Design | NIHON SEKKEI INC. |
n | Leibniz University's real estate management team | Sheppard Robson | Phillip Oswald/Constructlab |
uitectos | Captif | blocher partners | Architecture + estudio arquitectos primitivo gonzález / mmp architect
llwanger menzel architekten ingenieure gmbh | Gehri AG | Paustian | ebene03.büro für räume | Vega Ortiz
chitects | Claudia de Bruyn, two_space + product | brüchner-hüttemann pasch bhp | CBRE | Nikken Sekke
rchitekten | struhk architekten und Planungsgesellschaft mbH | Advanced Interior Solutions | Antje Pegge
ng | Gerald Kolm | Hafven, internal design team | Concrete Amsterdam | Axel Frey Innenarchitektur + Des
ty | Herzog & de Meuron | Leibniz University's real estate management team | Sheppard Robson | Phillip O
roup.lu | Allona Arquitectos | Captif | blocher partners | Architecture + estudio arquitectos primitivo go
poration | Ellwanger, ellwanger menzel architekten ingenieure gmbh | Gehri AG | Paustian | ebene03.büro
r | Casper Schwarz Architects | Claudia de Bruyn, two_space + product | brüchner-hüttemann pasch bhp
mbH | Fokkema & Partners Architekten | struhk architekten und Planungsgesellschaft mbH | Advanced Inte
r | Identi AG | Rainer Schilling | Gerald Kolm | Hafven, internal design team | Concrete Amsterdam | Axe
ent team at St. Gallen University | Herzog & de Meuron | Leibniz University's real estate management team
ann | PEIA ASSOCIATI | insidegroup.lu | Allona Arquitectos | Captif | blocher partners | Architecture +
ON | Outbox Studio | Obayashi Corporation | Ellwanger, ellwanger menzel architekten ingenieure gmbh |
| Spatial Concept | Art Nivo | MMoser | Casper Schwarz Architects | Claudia de Bruyn, two_space + pro
cts | Interior design studio LESON GmbH | Fokkema & Partners Architekten | struhk architekten und Plan
bagot | Interior Lepel & Lepel | Geyer | Identi AG | Rainer Schilling | Gerald Kolm | Hafven, internal design
urpose | The real estate management team at St. Gallen University | Herzog & de Meuron | Leibniz Uni
heimer | Ramsing & Co | Johannes Wegmann | PEIA ASSOCIATI | insidegroup.lu | Allona Arquitectos | Ca
ace | Meiho Facility Works Limited | OFFCON | Outbox Studio | Obayashi Corporation | Ellwanger, ellwang
ne Design | FLOOAT, Inc. | Petzi + Petzi | Spatial Concept | Art Nivo | MMoser | Casper Schwarz Archite
nikken Space Design Ltd. | mph architects | Interior design studio LESON GmbH | Fokkema & Partners Archi
Wackerhagen GmbH & Co. KG | Woods Bagot | Interior Lepel & Lepel | Geyer | Identi AG | Rainer Schilling | C
ON SEKKEI INC. | DWP Design with Purpose | The real estate management team at St. Gallen University | H
Constructlab | Ludwig Hilbersheimer | Ramsing & Co | Johannes Wegmann | PEIA ASSOCIATI | insidegroup.lu
mp architects. | Unispace | Meiho Facility Works Limited | OFFCON | Outbox Studio | Obayashi Corpora
ume | Vega Ortiz | Combine Design | FLOOAT, Inc. | Petzi + Petzi | Spatial Concept | Art Nivo | MMo
mp | CBRE | Nikken Sekkei Ltd., Nikken Space Design Ltd. | mph architects | Interior design studio LESON
rior Solutions | Antje Pegger for Wackerhagen GmbH & Co. KG | Woods Bagot | Interior Lepel & Lepel | Gey
ey Innenarchitektur + Design | NIHON SEKKEI INC. | DWP Design with Purpose | The real estate manag
eam | Sheppard Robson | Phillip Oswald/Constructlab | Ludwig Hilbersheimer | Ramsing & Co | Johannes V
estudio arquitectos primitivo gonzález / mmp architects. | Unispace | Meiho Facility Works Limited | OFFCO
AG | Paustian | ebene03.büro für räume | Vega Ortiz | Combine Design | FLOOAT, Inc. | Petzi + Petzi |
ct | brüchner-hüttemann pasch bhp | CBRE | Nikken Sekkei Ltd., Nikken Space Design Ltd. | mph architect
esellschaft mbH | Advanced Interior Solutions | Antje Pegger for Wackerhagen GmbH & Co. KG | Woods Ba
eam | Concrete Amsterdam | Axel Frey Innenarchitektur + Design | NIHON SEKKEI INC. | DWP Design with I
ty's real estate management team | Sheppard Robson | Phillip Oswald/Constructlab | Ludwig Hilbersheimer
r partners | Architecture + estudio arquitectos primitivo gonzález / mmp architects. | Unispace | Meiho
itekten ingenieure gmbh | Gehri AG | Paustian | ebene03.büro für räume | Vega Ortiz | Combine Design |
e Bruyn, two_space + product | brüchner-hüttemann pasch bhp | CBRE | Nikken Sekkei Ltd., Nikken Space D
chitekten und Planungsgesellschaft mbH | Advanced Interior Solutions | Antje Pegger for Wackerhagen GmbH
ternal design team | Concrete Amsterdam | Axel Frey Innenarchitektur + Design | NIHON SEKKEI INC. |
n | Leibniz University's real estate management team | Sheppard Robson | Phillip Oswald/Constructlab |
uitectos | Captif | blocher partners | Architecture + estudio arquitectos primitivo gonzález / mmp architect
llwanger menzel architekten ingenieure gmbh | Gehri AG | Paustian | ebene03.büro für räume | Vega Ortiz
chitects | Claudia de Bruyn, two_space + product | brüchner-hüttemann pasch bhp | CBRE | Nikken Sekke
rchitekten | struhk architekten und Planungsgesellschaft mbH | Advanced Interior Solutions | Antje Pegge
ng | Gerald Kolm | Hafven, internal design team | Concrete Amsterdam | Axel Frey Innenarchitektur + Des
ty | Herzog & de Meuron | Leibniz University's real estate management team | Sheppard Robson | Phillip O
roup.lu | Allona Arquitectos | Captif | blocher partners | Architecture + estudio arquitectos primitivo go
poration | Ellwanger, ellwanger menzel architekten ingenieure gmbh | Gehri AG | Paustian | ebene03.büro

Captif | blocher partners | Architecture + estudio arquitectos primitivo gonzález / mmp architects. | Uni
er menzel architekten ingenieure gmbh | Gehri AG | Paustian | ebene03.büro für räume | Vega Ortiz | Con
cts | Claudia de Bruyn, two_space + product | brüchner-hüttemann pasch bhp | CBRE | Nikken Sekkei Ltd
tecten | struhk architekten und Planungsgesellschaft mbH | Advanced Interior Solutions | Antje Pegger f
Gerald Kolm | Hafven, internal design team | Concrete Amsterdam | Axel Frey Innenarchitektur + Design | N
Herzog & de Meuron | Leibniz University's real estate management team | Sheppard Robson | Phillip Oswa
u | Allona Arquitectos | Captif | blocher partners | Architecture + estudio arquitectos primitivo gonzález
tion | Ellwanger, ellwanger menzel architekten ingenieure gmbh | Gehri AG | Paustian | ebene03.büro für
ser | Casper Schwarz Architects | Claudia de Bruyn, two_space + product | brüchner-hüttemann pasch
GmbH | Fokkema & Partners Architecten | struhk architekten und Planungsgesellschaft mbH | Advanced In
er | Identi AG | Rainer Schilling | Gerald Kolm | Hafven, internal design team | Concrete Amsterdam | Ax
ement team at St. Gallen University | Herzog & de Meuron | Leibniz University's real estate management
Wegmann | PEIA ASSOCIATI | insidegroup.lu | Allona Arquitectos | Captif | blocher partners | Architectu
DN | Outbox Studio | Obayashi Corporation | Ellwanger, ellwanger menzel architekten ingenieure gmbh | Ge
Spatial Concept | Art Nivo | MMoser | Casper Schwarz Architects | Claudia de Bruyn, two_space + pro
s | Interior design studio LESON GmbH | Fokkema & Partners Architecten | struhk architekten und Planung
got | Interior Lepel & Lepel | Geyer | Identi AG | Rainer Schilling | Gerald Kolm | Hafven, internal design
urpose | The real estate management team at St. Gallen University | Herzog & de Meuron | Leibniz Unive
| Ramsing & Co | Johannes Wegmann | PEIA ASSOCIATI | insidegroup.lu | Allona Arquitectos | Captif | bloc
Facility Works Limited | OFFCON | Outbox Studio | Obayashi Corporation | Ellwanger, ellwanger menzel a
FLOOAT, Inc. | Petzi + Petzi | Spatial Concept | Art Nivo | MMoser | Casper Schwarz Architects | Claud
Design Ltd. | mph architects | Interior design studio LESON GmbH | Fokkema & Partners Architecten | struhk
& Co. KG | Woods Bagot | Interior Lepel & Lepel | Geyer | Identi AG | Rainer Schilling | Gerald Kolm | Hafve
DWP Design with Purpose | The real estate management team at St. Gallen University | Herzog & de Me
Ludwig Hilbersheimer | Ramsing & Co | Johannes Wegmann | PEIA ASSOCIATI | insidegroup.lu | Allona A
ts. | Unispace | Meiho Facility Works Limited | OFFCON | Outbox Studio | Obayashi Corporation | Ellwange
z | Combine Design | FLOOAT, Inc. | Petzi + Petzi | Spatial Concept | Art Nivo | MMoser | Casper Schwa
i Ltd., Nikken Space Design Ltd. | mph architects | Interior design studio LESON GmbH | Fokkema & Partne
r for Wackerhagen GmbH & Co. KG | Woods Bagot | Interior Lepel & Lepel | Geyer | Identi AG | Rainer Schi
ign | NIHON SEKKEI INC. | DWP Design with Purpose | The real estate management team at St. Gallen Unive
swalt/Constructlab | Ludwig Hilbersheimer | Ramsing & Co | Johannes Wegmann | PEIA ASSOCIATI | insid
onzález / mmp architects. | Unispace | Meiho Facility Works Limited | OFFCON | Outbox Studio | Obayas
für räume | Vega Ortiz | Combine Design | FLOOAT, Inc. | Petzi + Petzi | Spatial Concept | Art Nivo | MMo
p | CBRE | Nikken Sekkei Ltd., Nikken Space Design Ltd. | mph architects | Interior design studio LESO
erior Solutions | Antje Pegger for Wackerhagen GmbH & Co. KG | Woods Bagot | Interior Lepel & Lepel | Ge
l Frey Innenarchitektur + Design | NIHON SEKKEI INC. | DWP Design with Purpose | The real estate manag
n | Sheppard Robson | Phillip Oswalt/Constructlab | Ludwig Hilbersheimer | Ramsing & Co | Johannes We
estudio arquitectos primitivo gonzález / mmp architects. | Unispace | Meiho Facility Works Limited | OF
Gehri AG | Paustian | ebene03.büro für räume | Vega Ortiz | Combine Design | FLOOAT, Inc. | Petzi + Pe
oduct | brüchner-hüttemann pasch bhp | CBRE | Nikken Sekkei Ltd., Nikken Space Design Ltd. | mph arch
nungsgesellschaft mbH | Advanced Interior Solutions | Antje Pegger for Wackerhagen GmbH & Co. KG | Woo
n team | Concrete Amsterdam | Axel Frey Innenarchitektur + Design | NIHON SEKKEI INC. | DWP Design wit
iversity's real estate management team | Sheppard Robson | Phillip Oswalt/Constructlab | Ludwig Hilbe
Captif | blocher partners | Architecture + estudio arquitectos primitivo gonzález / mmp architects. | Uni
er menzel architekten ingenieure gmbh | Gehri AG | Paustian | ebene03.büro für räume | Vega Ortiz | Con
cts | Claudia de Bruyn, two_space + product | brüchner-hüttemann pasch bhp | CBRE | Nikken Sekkei Ltd
tecten | struhk architekten und Planungsgesellschaft mbH | Advanced Interior Solutions | Antje Pegger f
Gerald Kolm | Hafven, internal design team | Concrete Amsterdam | Axel Frey Innenarchitektur + Design | N
Herzog & de Meuron | Leibniz University's real estate management team | Sheppard Robson | Phillip Oswa
u | Allona Arquitectos | Captif | blocher partners | Architecture + estudio arquitectos primitivo gonzález
tion | Ellwanger, ellwanger menzel architekten ingenieure gmbh | Gehri AG | Paustian | ebene03.büro für
ser | Casper Schwarz Architects | Claudia de Bruyn, two_space + product | brüchner-hüttemann pasch
GmbH | Fokkema & Partners Architecten | struhk architekten und Planungsgesellschaft mbH | Advanced In
er | Identi AG | Rainer Schilling | Gerald Kolm | Hafven, internal design team | Concrete Amsterdam | Ax
ement team at St. Gallen University | Herzog & de Meuron | Leibniz University's real estate management
Wegmann | PEIA ASSOCIATI | insidegroup.lu | Allona Arquitectos | Captif | blocher partners | Architectu
DN | Outbox Studio | Obayashi Corporation | Ellwanger, ellwanger menzel architekten ingenieure gmbh | Ge
Spatial Concept | Art Nivo | MMoser | Casper Schwarz Architects | Claudia de Bruyn, two_space + pro
s | Interior design studio LESON GmbH | Fokkema & Partners Architecten | struhk architekten und Planung
got | Interior Lepel & Lepel | Geyer | Identi AG | Rainer Schilling | Gerald Kolm | Hafven, internal design
urpose | The real estate management team at St. Gallen University | Herzog & de Meuron | Leibniz Unive
| Ramsing & Co | Johannes Wegmann | PEIA ASSOCIATI | insidegroup.lu | Allona Arquitectos | Captif | bloc
Facility Works Limited | OFFCON | Outbox Studio | Obayashi Corporation | Ellwanger, ellwanger menzel a
FLOOAT, Inc. | Petzi + Petzi | Spatial Concept | Art Nivo | MMoser | Casper Schwarz Architects | Claud
Design Ltd. | mph architects | Interior design studio LESON GmbH | Fokkema & Partners Architecten | struhk
& Co. KG | Woods Bagot | Interior Lepel & Lepel | Geyer | Identi AG | Rainer Schilling | Gerald Kolm | Hafve
DWP Design with Purpose | The real estate management team at St. Gallen University | Herzog & de Me
Ludwig Hilbersheimer | Ramsing & Co | Johannes Wegmann | PEIA ASSOCIATI | insidegroup.lu | Allona A
ts. | Unispace | Meiho Facility Works Limited | OFFCON | Outbox Studio | Obayashi Corporation | Ellwange
z | Combine Design | FLOOAT, Inc. | Petzi + Petzi | Spatial Concept | Art Nivo | MMoser | Casper Schwa
i Ltd., Nikken Space Design Ltd. | mph architects | Interior design studio LESON GmbH | Fokkema & Partne
r for Wackerhagen GmbH & Co. KG | Woods Bagot | Interior Lepel & Lepel | Geyer | Identi AG | Rainer Schi
ign | NIHON SEKKEI INC. | DWP Design with Purpose | The real estate management team at St. Gallen Unive
swalt/Constructlab | Ludwig Hilbersheimer | Ramsing & Co | Johannes Wegmann | PEIA ASSOCIATI | insid
onzález / mmp architects. | Unispace | Meiho Facility Works Limited | OFFCON | Outbox Studio | Obayas
für räume | Vega Ortiz | Combine Design | FLOOAT, Inc. | Petzi + Petzi | Spatial Concept | Art Nivo | MMo



Wilkhahn factory, Bad Münde, Germany; architecture: Thomas Herzog, photo: Mandy Will

Editorial

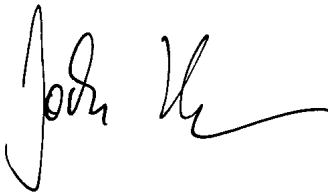
When my grandfather founded a small chair factory near Hanover in north Germany in 1907, he could never have guessed that it would turn into a company with an international reputation for designing first-class contract furniture one day. A family-run company like ours couldn't wish for a better recommendation than when architects, designers, partners and customers from all over the world repeatedly choose Wilkhahn solutions for such a wide range of different requirements.

Although all these parties are so diverse, they have one thing in common. They share our conviction that people's well-being and health are just as important as fostering collaboration. They believe that a clear and consistent design language helps to convey identity. And alongside profitability, they want us to help ensure their organizations are sustainable in tomorrow's world too. In other words, they also believe in the power of good design.

Whether it's a question of encouraging movement in digital workspaces, or backdrops that foster team building, learning, innovation and change – the quality of design has been shown to play a key role in how well an organization performs financially. Together, we want to offer attractive solutions that last and last for the generations after us. And architects and designers know all about this responsibility.

We'd like to express our thanks to everyone who chose Wilkhahn and allowed us to publish details about their projects. Our goal is to make sure that our products reflect the requirements of all sorts of design concepts. Our products are understated, yet sophisticated and fulfill their purpose in the best possible way. We hope you find this brochure and its journey through a range of organizations, companies, continents and cultures inspiring. The desire to design sustainable and better environments is the common denominator throughout.

Regards

A handwritten signature in black ink, appearing to read 'Jochen Hahne', with a stylized, flowing script.

Jochen Hahne

Contents

References



Photo: Jalal Fakhreddine

4 – 31 Education | Culture



Photo: Studio PEIA, Giovanna Silva

32 – 53 NGOs | Government



Photo: Scott Brooks

54 – 147 Corporations



Photo: Leuchtende Hotelfotografie, Thomas Haberland

148 – 171 Hospitality

Education | Culture



École 1337, Khouribga, Morocco Interior: DWP Design with Purpose
Photos: Jalal Fakhreddine

Funded by the OCP (Office Chérifien des Phosphates) Group, École 1337 in Morocco is a pioneering college project that trains the most talented students to be programmers and developers regardless of their social background. Up to 200 young people complete a free, three-year program here. The teaching concept is based on students taking responsibility for their futures and sharing skills. The college is open round the clock, has no timetable or text books, trainers instead of teachers, clusters instead of classrooms and a design concept that marries both the analogue and digital world.



The college was set up on a new campus where Morocco's leading digital companies are based. The design of the building's exterior also reflects how digital natives express themselves.



Art studio Placebo designed the floors, ceilings and walls of hallways, dining areas, break rooms, conference spaces and collaborative areas like installations to capture the spirit of the young generation.



Despite the colorful mix, the furniture and interior design are perfectly coordinated – just like the playful seating and turquoise IN office chairs (design: wiege) shown here.



“The fascination of the digital world and spontaneous competitions with each other frequently mean we spend more than 12 hours in front of a computer. So ergonomic office chairs are a must. We chose IN because it’s comfortable whatever the posture, built to last, encourages users to engage in three-dimensional movements and its design is ideal for this young generation.”

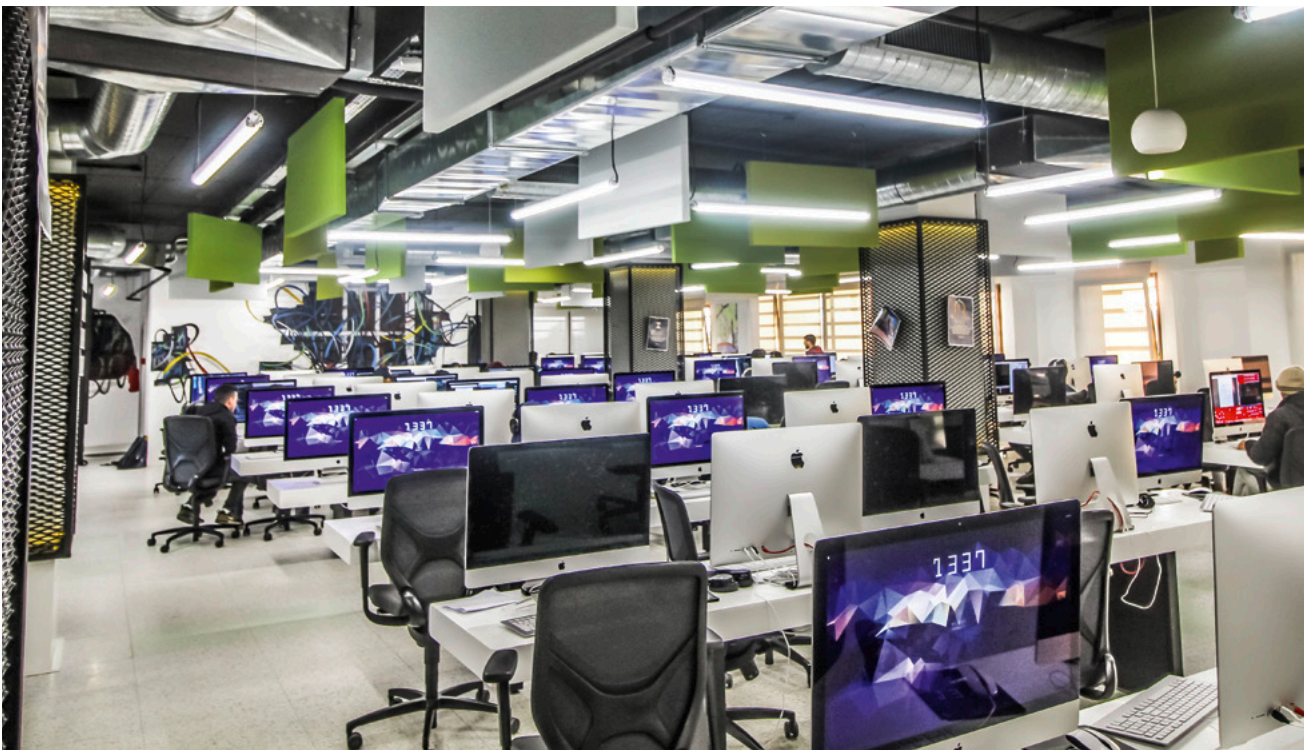
Hamza Chefchaoui, CEO of DWP



3D kinematics and high-tech manufacturing, such as two-component injection molding of the seat and backrest element and Formstrick (form-fit knit) ensure users can move as they wish in all directions. IN office chair (design: wiege)



Just like the soles and uppers on sneakers, IN's black and colored frame components can be coordinated with seat covers in different colors and the translucent covered backrests.



On the other hand, the IN chairs in the open space are all in black to prevent distractions and help people concentrate.

theCo, University of St. Gallen, Switzerland Interior: The real estate management team at St. Gallen University
Photos: Anna-Tina Eberhard

The University of St. Gallen has a top ranking among European business schools. Based on the organization's From Insight to Impact vision, the real estate management team collaborated with the students to create a co-working space for staff, the public and people taking bachelor, master's or doctoral degrees. Curtains and mobile tables can divide the space up in different ways and the lightweight chairs, some of which are stackable, ensure maximum flexibility.



The Insit upholstered bench with backrest on stage (design: Wolfgang C.R. Mezger) is also ideal for group chats.



Customized, mobile high tables from the Timetable Shift range (design: Andreas Störiko) with Stand-up stools (Design: Thorsten Franck).



The classic Confair folding table (design: Andreas Störiko) is mobile, robust, space-saving to stow away and quick to turn into a large table. Paired here with Occo task chairs (design: jehs+laub).



The Aula stacking chairs (design: Wolfgang C.R. Mezger) are used as multipurpose seating. The two ranges are color-matched precisely to create a similar, harmonious look.



“The flexibility, quality and zeitgeist that set Wilkhahn furniture apart complement the university and the way it operates perfectly.”

Hans Jörg Baumann, executive MBA HSG,
director of real estate

Blavatnik School of Government, Oxford, United Kingdom Architecture + Interior: Herzog & de Meuron
Photos: Vojislav Nikolic

The Blavatnik School of Government is a new architectural landmark in the historic university town of Oxford in the UK. Founded as recently as 2010, the school's mission is to inspire and encourage better government and public policy around the world. It has built up an excellent reputation within a short space of time and produces about 120 masters of public policy annually. The school is named for American entrepreneur Leonard Blavatnik, who contributed a generous donation to make the new build possible.



The building by architects Herzog & de Meuron consists of a series of four discs stacked on top of one another and shifted slightly on each floor and a rectangular section, all of which are connected with one another by a spiral staircase in the middle.



The architects picked the classic Modus task chair (design: Klaus Frank, Werner Sauer and wiege) for the auditorium. The chair comes with a sturdy backrest shell, making it ideal for the university.



The lecture hall has seating for approx. 200 and stands apart for its cutting-edge lighting and multi-media equipment, outstanding acoustics and exceptional design. The stylish and consistently clear form of Modus goes with the color and material concept perfectly.





Royal Stables, Leibniz University, Hanover, Germany Interior: Leibniz University's real estate management team
Photos: Frank Schinski

For many years, the erstwhile royal stables were used as a workshop by the mechanical engineering faculty. After the department moved into a new build, the university was able to transform the building, which enjoys protected architectural status, into a communications and meeting hub for the sciences, arts and industry. The modern furnishing in the multifunctional ceremonial hall, the offices and the workshop and seminar space, creates a link between the past and future.



The stables' typical brickwork dating back to 1888 has been carefully restored. Modern technology is used inside and evident in the storage area for the space-saving, stackable seating (from the Aline range, design: Andreas Störiko).



There is a sophisticated lighting concept with a sound-absorbent wall at the front. The transparent Aline chairs (design: Andreas Störko) are understated to provide no visual distraction and have no impact on the acoustics. The result is a space for a wide range of events such as parties to lectures to concerts.





This workshop and seminar space can be divided up with partition walls and comes with Confair folding tables (design: Andreas Störko) and the stackable, Aula multipurpose chair (design: Wolfgang C.R. Mezger). As a result, people can configure settings themselves.



If the space needs to be emptied for a party, the chairs can be stacked in no time and the mobile tables flipped up and put in a corner someplace.



The loft on the top floor has plenty of natural light and is ideal for lots of purposes, such as large conferences, group projects or as a huddle space. What's more, it requires no facility management staff to reconfigure it.



“We’re delighted that Wilkhahn supported us with this challenging refurbishment and conversion project. The timelessly modern design of the furniture goes superbly with the historical architecture. And the furniture’s sophisticated functionality immediately indicates all the different ways it can be used. These multipurpose aspects are the cornerstones of the interior-design concept for conferences, workshops, galas and cultural events.”

Emeritus professor Erich Barke,
president of Hanover’s Leibniz University

Sammy Ofer Centre, London Business School, United Kingdom Architecture + Interior: Sheppard Robson
Photos: Diane Auckland

The Victorian Old Marylebone Town Hall at the heart of the English capital was rented to the London Business School (LBS) in 2012. The organization added a new teaching hub to the old building called the Sammy Ofer Centre after the person who contributed a big donation. Some of the building, such as its council hall and several consulting rooms for citizens, are still used publicly. The other sections accommodate 37 seminar spaces, six lecture halls, a library and recreational spaces, whose modern, linear features deliberately contrast with the historic atmosphere.



The main and ancillary building are linked by a distinctive, bridge-like steel-glass structure, which also demarcates the university's separate, modern entrance hall.



There's a break out area flooded with light at the core of the glass foyer and stylish Asienta benches without backrests invite students to chat with one another and chill (design: jehs+laub).



The stackable Neos cantilever chair was chosen as seating for the seminar spaces. It stands apart for the clear, consistent shape of the seat shell and the easy-to-grab outer grip and excellent comfort (design: wiege).



The colors of the upholstery covers on the inside match the colors on the walls in each room.

Bauhaus Reenactment, Dessau, Germany Architecture: Phillip Oswalt/Constructlab, based on plans by Ludwig Hilbersheimer
Photos: Christoph Petras

To commemorate the Bauhaus centenary, Prof. Phillip Oswalt collaborated with students at Kassel University to build a house for the very first time, which was designed by Bauhaus lecturer Ludwig Hilbersheimer as a “growing house” in 1930. In just three weeks, the L-shaped, single-story, wooden building was constructed as a design-build project by the university from prefabricated components at the historic site it was destined for, the Dessau-Törten World Heritage Site.



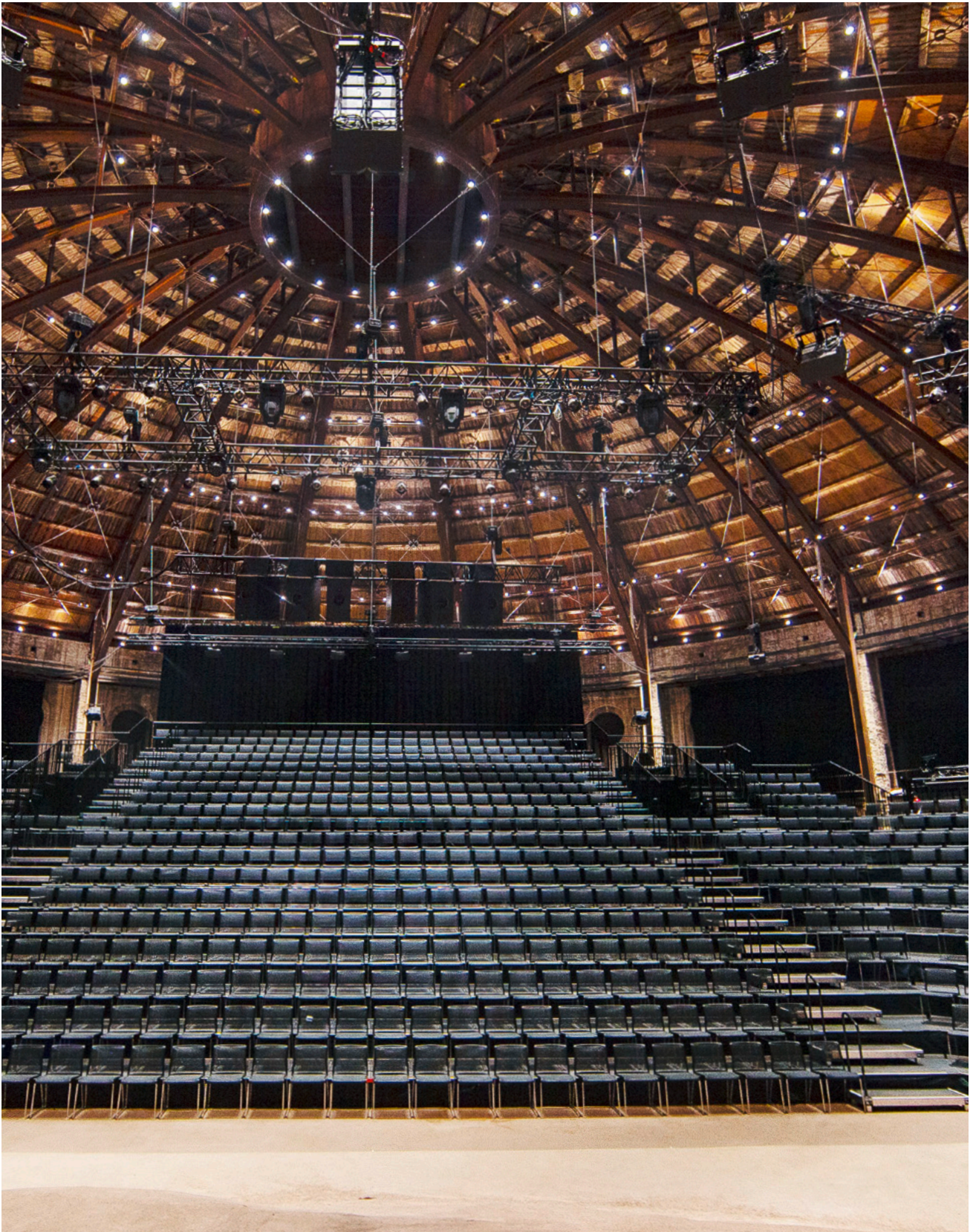
The temporary building is a communal and project space for the community, schools and Dessau University. It will be dismantled at a later date and used as an information space at the documenta art exhibition in Kassel.



The mobile, cordless, electrically height-adjustable Timetable Lift has a flip-top table top that can be written on (design: Andreas Störko). In conjunction with the Stand-up stools (design: Thorsten Franck) and Sitzbock pommel-horse-like seats (design: Rudolph Schelling Webermann), it's ideal for the communal project space.



Visitors can see the plans, a wooden model and look at the history of the house on display panels. And anyone wanting to take the weight off their feet can grab a Stitz sitting-standing stool, designed by Hans Roericht, an erstwhile student and lecturer at Ulm University of Design.



The remodel also involved replacing the seating for 900 people. The team picked the stackable, Aline sled-base chair (design: Andreas Störiko), which doesn't just look stylish but also has no negative impact on the acoustics.

Gasværk theatre, Copenhagen, Denmark Interior: Ramsing & Co
Photos: Louise Stickland – courtesy of Kinesys; Wilkhahn

The former gas tank, which had been planned by architect Martin Nyrop in 1883, has been used as a theater since the 1970s. In order to update the impressive theater's 40-year-old light, sound and stage equipment, a brand-new dome made of curved roof trusses was placed in the room on 16 columns, from which all the theater equipment is suspended.



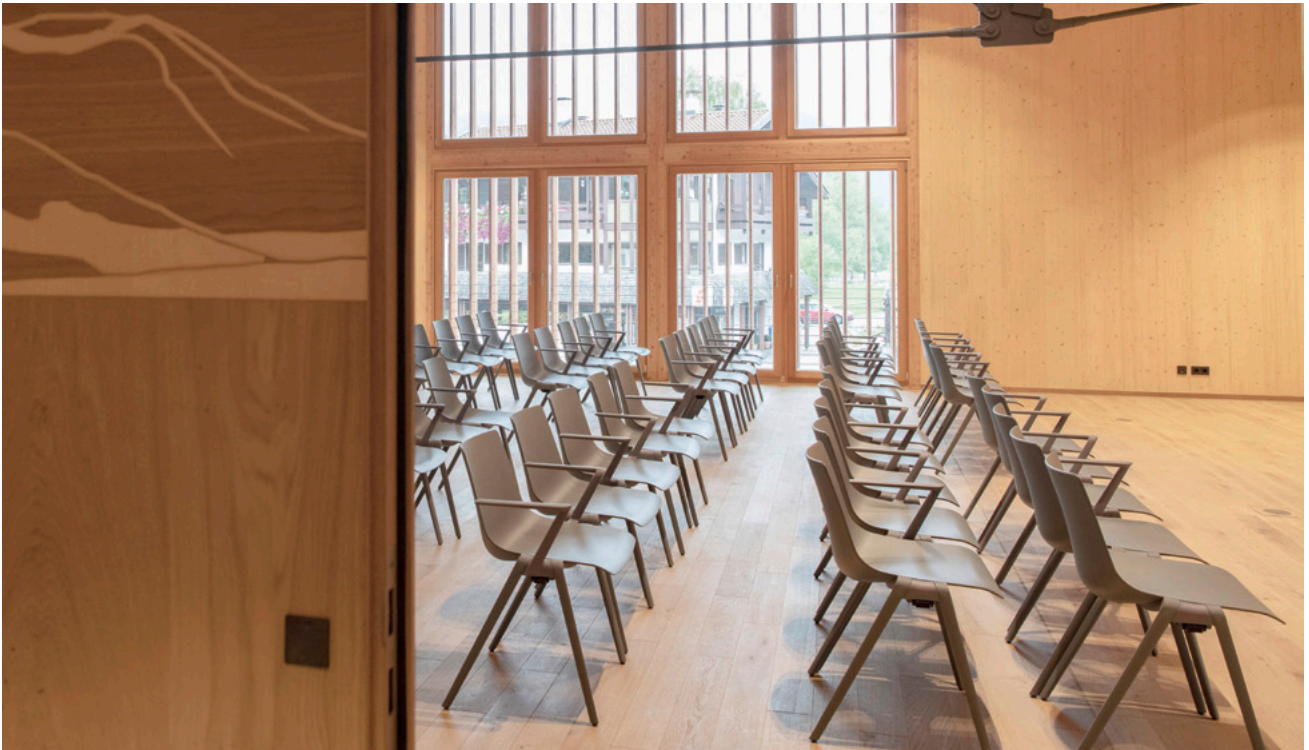
The black cover of the seat and backrest frame doesn't reflect light or sound. It indicates which chairs are unoccupied and makes them very comfortable, even during long shows.

Schliersee Local History Museum, Germany Architecture + Interior: Johannes Wegmann
Photos: Roger Barth; Robert Foster; Cordula Flegel

The Schredl House in the heart of Schliersee from the early 15th century has been used as a local history museum for over 100 years. The local architect increased the size of the building by using a glass foyer to make the extension stand out from the old building. A kindergarten and a multipurpose function room on the top story are just two of the spaces incorporated in the extension.



The height of the gables and eaves in the historic building is the same in the extension, but instead of a balcony, a projecting structure with vertical wooden panels and slats provides shade for the surprisingly large event space, which is on the top story.



The stackable Aula plastic chair (design: Wolfgang C.R. Mezger) is a charming contrast with the wood, which is an organic material and traditionally used locally as building material.



The mAx folding tables (design: Andreas Störiko) with connecting leaves can be linked to form very sturdy banquet-style layouts and are space-saving to keep in the storage space when not in use.

NGOs | Government



The UN's Room XIX, Geneva, Switzerland Interior: PEIA ASSOCIATI
Photos: Studio PEIA, Giovanna Silva

The Palais des Nations, built in neoclassical style in 1936, was repeatedly extended over the decades. The largest hall, financed by Qatar, is the new Room XIX with 800 seats. Due to its stylized, wafer-thin, wood-fabric-composite ceiling and wall panels with sophisticated acoustics and superb multimedia equipment, this new space is quite a highlight. The redesign of the seating pays tribute to famous designers like Le Corbusier and Oscar Niemeyer, who worked on construction projects for the UN.



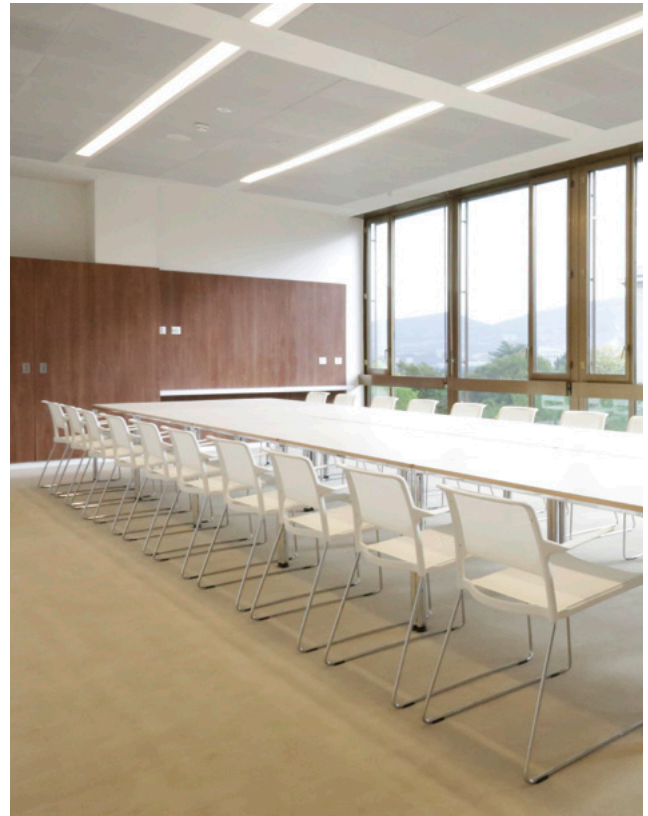
The lounge areas overlooking the plenary chamber are furnished with the classic four-leg Contas table range (design: wiege, Fritz Frenkler, Anette Ponholzer) and the light, transparently covered Aline sled-base chairs (design: Andreas Störiko).



The international plenary sessions, which often last for hours, demand the utmost concentration and agility, especially from the interpreters. The 3D IN office chair (design: wiege) supplies the muscles and brain with plenty of oxygen.



The architects used color so that interpreters could find their way around better when lighting is dimmed. As a result, the seat covers, backrest and swivel arms on the chairs are all a vibrant red.



Thanks to the Aline all-rounder (design: Andreas Störiko) and the stackable Contas conference tables with their legs that turn in (design: wiege, Fritz Frenkler, Anette Ponholzer), the conference rooms double as a place to hold presentations, seminars or training sessions.



“The task chairs are distinctive and stylish, boast a high level of functionality and ergonomic comfort and are some of the best office chairs we’ve ever tested. The movable tables and stackable chairs are impressive for their clear design and materials, fabrics and colors, all of which are pleasing to the eye.”

Giampiero Peia and Marta Nasazzi

Chamber of Commerce, Luxembourg Interior: insidegroup.lu
Photos: Vincent Remy

Luxembourg's chamber of industry and commerce has a conference and vocational training center with a whole host of halls and meeting rooms of difference sizes and floor space of 6,500 square meters. The center is located in a building complex, designed by the French architect Claude Vasconi (1940 – 2009) and opened in the Kirchberg business district in 2004. Fifteen years later, the conference rooms were created by Israeli designer Yuval Samuelov who worked very closely with interior design studio INSIDE GROUP.



Luxembourg's skyline is applied as a visual repeatedly referenced below the matte black ceiling with its perforated steel lagging as colorful grids in the carpets or pixel-like, sporadic silhouettes on walls painted a vibrant blue.



Graph conference chairs and tables (design: jehs+laub) are found in the smaller conference and meeting rooms – in this case with matte-polished aluminum frames.



“Wilkhahn’s Graph conference chair isn’t just very comfortable, its classy silhouette also goes very well with our graph-inspired concept. Its clear but organic line creates a lively, unobtrusive contrast with the striking white conference table.”

Jan Seligson, CEO of insidegroup.lu



The centerpiece is the large conference room for 50 people, which was created with Israeli design studio Yuval Samuelov (Tel Aviv) and comes in matte black, natural wood hues and brilliant white.



The horseshoe-shaped conference table made of Corian® in glossy white is paired with black leather Graph conference chairs (design: jebs+laub).

Sociedad Española de Cardiología, Madrid, Spain Interior: Allona Arquitectos
Photos: Allona Arquitectos

The headquarters of the Spanish Society for Cardiology and the Spanish Heart Foundation are located in the north east of Madrid near to Plaza de Toros de Las Ventas. Allona Arquitectos were appointed to extensively refurbish the existing building and fit it out for people with special needs so that it could become a modern conference center. Next to the office space, they integrated an auditorium, a very versatile seminar space, which can be partitioned, a café and several meeting rooms.



The foyer is dominated by white, red and black. Red, upholstered Neos office chairs (design: wiege) were placed behind the sculptural-looking reception counter.



Flexible partitions divide the seminar space up into three sections, each of which is furnished differently. The first segment has white-red, stackable Metrik cantilever chairs (design: WhiteID) and a Logon table (design: Andreas Störko).



“Once we’d won the competition, we were in charge of the architecture, engineering and interior design. And the upshot is a building that’s ideal for people with special needs, transparent, stylish and versatile. As a studio with a wealth of experience in designing office projects, we have regularly collaborated with Wilkhahn for many years because its products stand apart for their timeless design and superior quality.”

Miguel Allona Alberich, Allona Arquitectos



The spacious bright-green café is an appealing place to take a break and has practical, stackable, beige Occo chairs (design: jehs+laub).



A second segment is furnished for presentations and the blue, through-dyed, stackable, all-plastic Aula chairs with armrests offer exceptional comfort (design: Wolfgang C.R. Mezger).



White highboards structure the open space for office workers and add privacy, but still allow people to stay in eye contact. Similarly to the reception, the Neos office chair range (design: wiege) promises dynamic sitting here too.

CEFIC, Brussels, Belgium Interior: Captif
Photos: Ellis Humblé

Belliard 40 by Art&Build Architects is a new build with lots of daylight in the heart of the European District in Brussels. Its central building provides offices for a number of organizations and associations. The European Chemical Industry Council (Cefic) appointed interior designers Captif (Antwerp) to integrate the various member organizations of the parent council coherently in a new office design. The interior designers chose an open working environment with rooms placed in the space to encourage an activity- and movement-based culture.



The smaller, open huddle spaces are fitted out with mobile, task chairs from the Occo range (design: jehs+laub), while distinctive-looking Metrik cantilever chairs (design: white ID) furnish the pods.



The internal, larger meeting room with 22 Occo chairs has a table configuration with integrated multi-media equipment and a screen for presentations and video conferences.



“We picked Wilkhahn’s products to furnish a lot of the spaces. The north-German manufacturer supplied a large, customized Graph table in an open rectangle format with rounded edging for the state-of-the-heart room in the conference center. The stylish conference chairs reflect this table format subtly in their backrests. We also added motion-stimulating seating, such as the Stand-up stool, the Metrik cantilever chair or the Occo conference chair in other areas too.”

Benjamin Vandamme, Captif CEO



The state-of-the-art conference room on the 13th story doesn't just offer a spectacular view over the Brussels skyline, sophisticated conference equipment is also fitted to the customized Graph table configuration (design: jehs+laub).



The Sola conference chair (licensed by Davis Furniture, design: Justus Kolberg) also gives up to 40 conference attendees excellent comfort and dynamic movement.

Building for the State Parliament of Lower Saxony, Hanover, Germany Interior: blocher partners
Photos: Heinrich Hecht

To meet the requirements of a modern-day parliament, Stuttgart-based architects, blocher partners, transformed the state parliament of Lower Saxony with its ensemble of the Leine Palace and post-war building by architect Dieter Oesterlen, both of which are protected as historic buildings. They added a new structure to the ensemble's interior, which, with a glass plenary chamber and central portico, translates a contemporary understanding of democracy into timeless architecture. The members of parliament can now look through the glazed parts of the outstanding facade and out into the urban space all the way to the town hall.



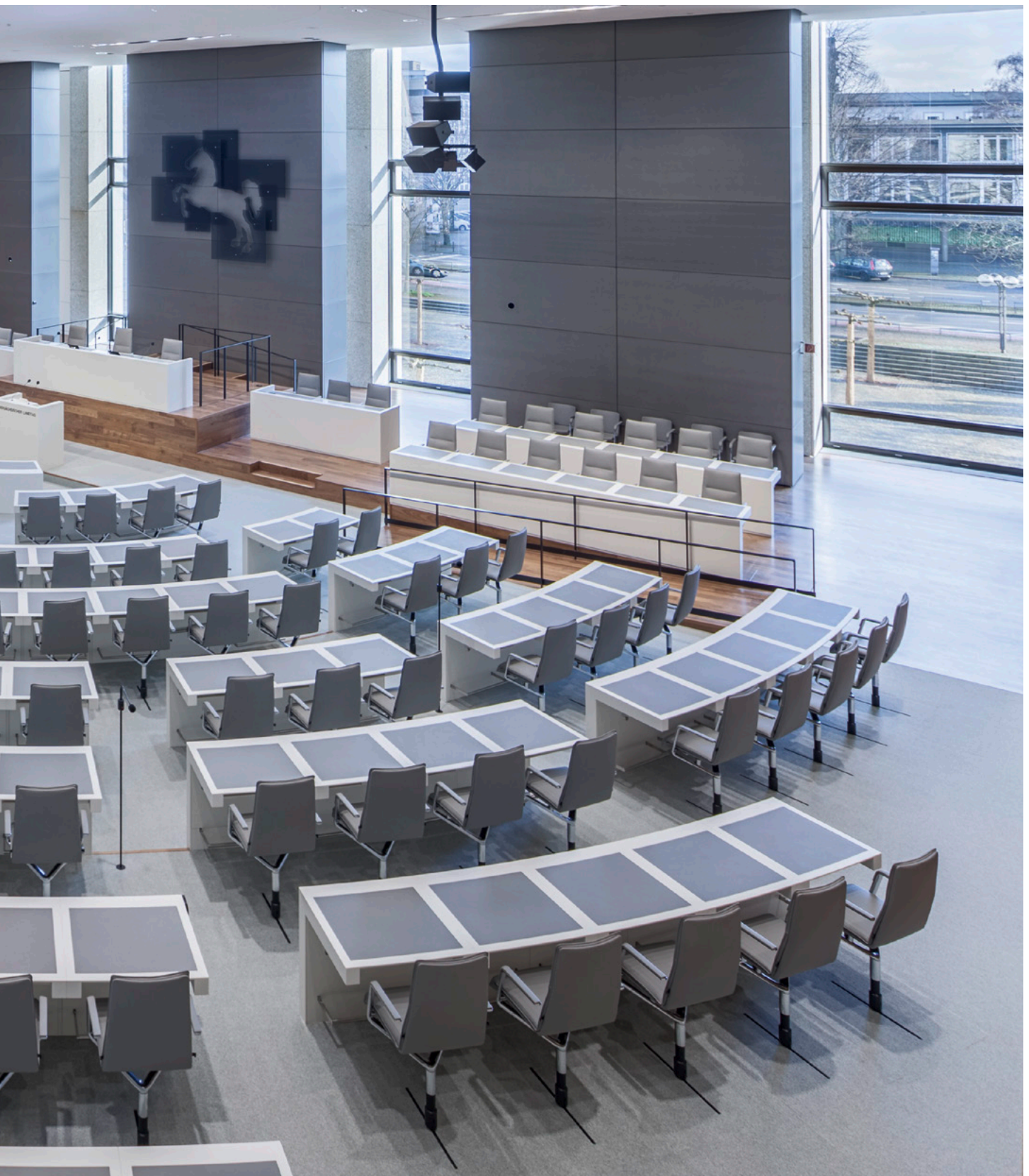
The classicist facade of the former Leine Palace, designed by Georg Ludwig Friedrich Laves, is the main entrance to the new, light-flooded portico, which acts as a central point from which other parts of the building branch off.



The Sola conference chair (licensed by Davis Furniture, design: Justus Kolberg) was customized for the plenary chamber. The center column of the majority of the chairs is embedded into the floor via a runner so that the chairs are always centered in front of the table and return springs automatically align them with the table edge.



A visitor and press gallery made of walnut and glass lines the room, with the semi-circular seating for the members of parliament in the middle. Otherwise, the design is all about shades of gray. Consequently, the chairs are covered with the same gray leather in the table segments.

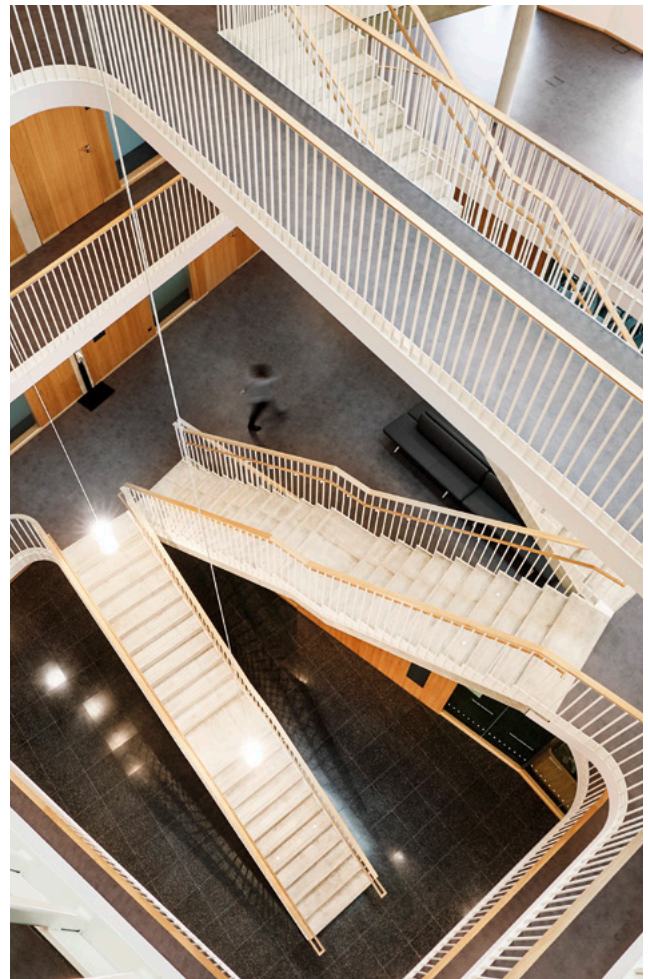


Town hall, Salem, Germany Architecture + Interior: estudio arquitectos primitivo gonzález / mmp architects.
Photos: Anja Koehler, andereart.de

The Spanish architecture studio won the European-wide architecture competition to design the town hall in the new center of the town of Salem. The design featured a simply cube clinkered with red brick. The new town hall, office of records, town council and library are accommodated behind the subtly structured and well-proportioned facades.



Outstanding features are the council hall, which juts out over the cube and the enormous clock, a reference to a longstanding tradition of European town halls telling citizens what the time is.



Access to the inside of the building is via an open staircase, which is surrounded by galleries and walkways with stylish banisters, both of which define and give the stairwell structure.



Insit benches (design: Wolfgang C.R. Mezger) placed back to back on the softly curved galleries of varying depths invite people to stop and linger for a while. As the benches protrude over their bases at the side, people can sit on the ends of them too.



The tautly upholstered benches are in standard seating heights so that people of any age can get up more easily. The space underneath lends the furniture a lightweight look and makes them easy to clean as well.

Corporations



Woodside, Perth, Australia Interior: Unispace
Photos: Shannon McGrath

The headquarters of energy utility Woodside in Perth, designed by Cox Architecture, won Australia's most prestigious sustainability accolade, the Green Star. The building is designed as a campus for the 5,000 employees, has a family and community floor and offers training programs, wellness and leisure options. The interior design by Unispace offers over 60 different office environments – from meet-up areas, pods and huddle spaces to collaborative workspaces all the way to glass conference and recreational rooms.



Part of the sustainability concept includes the exceptionally ergonomic and comfortable furniture, such as the mobile Graph conference chairs (design: jehs+laub) and the classic FS-Line task chairs (design: Klaus Franck, Werner Sauer), which fuse dynamic sitting with timeless elegance and top quality.

Sega Sammy Holdings Inc., Tokyo, Japan Interior: Meiho Facility Works Limited
Photos: SS Kikaku Inc.

For the headquarters of the Japanese Sega Sammy Group, which is one of the leading manufacturers of video games, architects at Meiho Facility Works chose a subtle mix of natural, classy materials to lend the clearly designed rooms depth and a warm elegance. The large, multifunctional auditorium is a deliberate contrast and has suggestions of an industrial aesthetic and a technology-driven movie world.



The meeting room with its adjacent lounge has a lightweight, stylish Logon table configuration (design: Andreas Störiko) with light-colored wood veneer and mobile, medium-height Graph chairs (design: jehs+laub).



This meeting room features a heavy, apparently immovable pedestal table with a sedate look and is contrasted appealingly with the sleek, classic Modus Executive chair with light-colored upholstery (design: Klaus Franck, Werner Sauer and wiege).



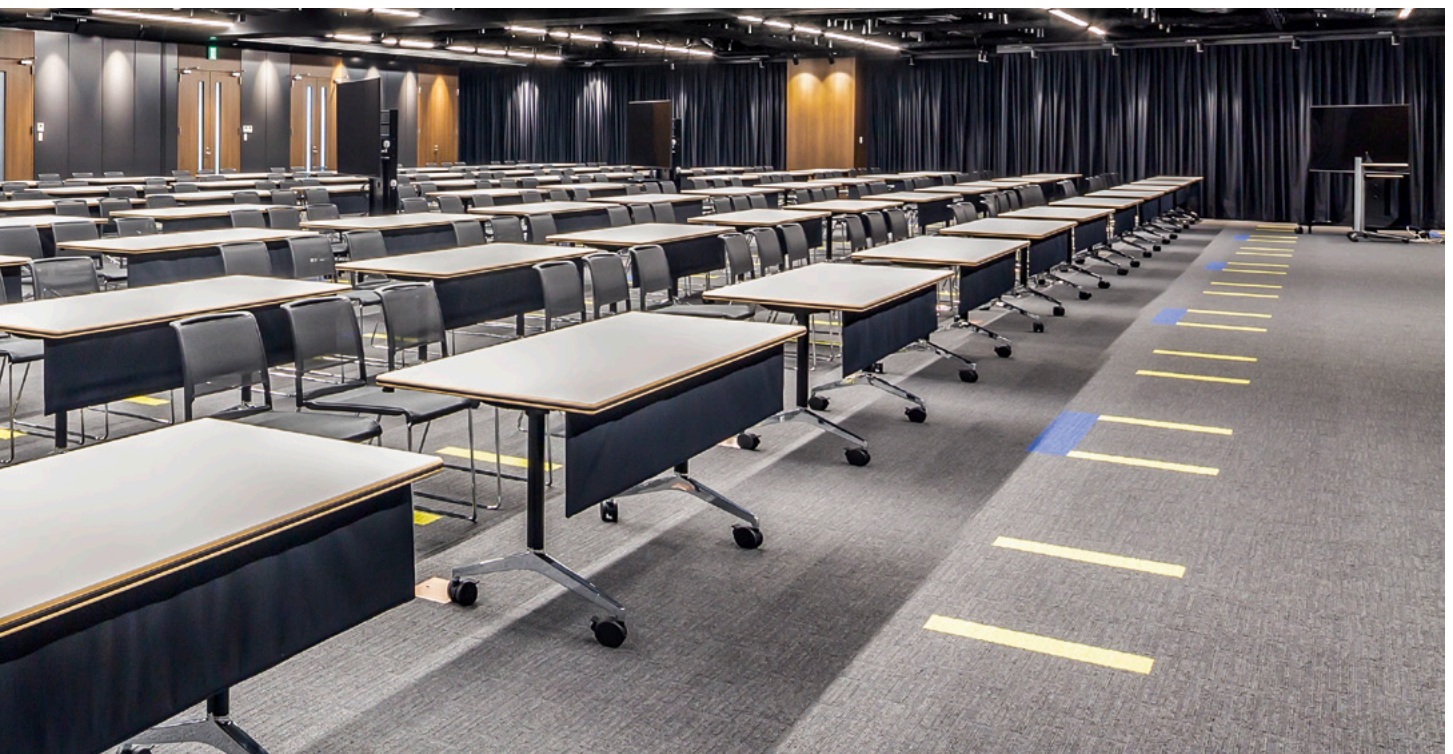
In the large conference room, mobile Graph chairs with high backrests (design: jehs+laub) are positioned around the conference table, which is also made of shiny reddish natural wood, underneath a wooden-paneled ceiling with integrated lighting.



The large, multifunctional auditorium is almost completely in black with the building's wiring showing on the ceiling. The space has furniture that combines outstanding comfort with maximum versatility.



The black-covered Aline sled-base chairs look virtually transparent and can be stacked in a very space-saving way. The mobile Timetable tables with modesty panels can be assembled and disassembled in no time and nest into one another (design of both ranges: Andreas Störiko).



Rostelecom, Moscow, Russia Interior: OFFCON
Photos: Solo Office Interiors

The Russian telecommunications company appointed Architecture studio OFFCON to design a new conference room for its Moscow headquarters. They developed a concept for a space, which, with its illuminated ceiling and exquisite wooden and high-gloss paneling, looks very prestigious and can also be used for negotiations, seminars, readings, training sessions and presentations. Clever lighting, leading-edge multi-media equipment and the highly versatile furniture from furnishing specialist Solo help pull the concept off.



A customized conference system of mobile Confair folding tables and Timetable tables (design: Andreas Störiko) can be configured in no time.



Just like the tables, the mobile Graph chairs (design: jehs+laub) can be wheeled out of the hall when needed for a presentation. Then compact-to-store Sito cantilever chairs are used (design: wiege).



“The Wilkhahn tables are surprisingly comfortable and easy to handle thanks to the high-quality craftsmanship and attention to detail. The customer picked Graph chairs, which we agreed were the best choice thanks to their comfortable ergonomics and homogeneous design – like the stackable Sito chairs.”

Andrey Kalmykov, OFFCON



The new conference rooms have different themes based on building materials. The Metrik cantilever chair (design: white ID) is the concept's common thread.

NEPI Rockcastle, Bucharest, Romania Interior: Outbox Studio
Photos: Tryingtodoart SRL

NEPI Rockcastle, an international project developer for shopping malls, is the industry's biggest player in central and eastern Europe. Over office space of around 2,000 square meters, the concept by interior designers Outbox Studio centers around what lies at the heart of day-to-day operations, the attractive side of construction projects – or the construction materials to be more precise. Outbox Studio and furnishing specialist Ofima combined forces to generate the leitmotif.



Metrik has a seamless, sculptural look and its choice of colors and covers reflect the rest of the interior design with its mix of variety but one design language throughout.



“We added various materials such as wood, concrete, glass and aluminum to the interior for the NEPI Rockcastle office in Bucharest. We chose Metrik cantilever chairs for the seating because their crisp design blends in unobtrusively with all the different environments. The colors of the upholstery are driven by the material that each room is based on, but also create accents.”

Petru Darida, Gruia Dumitrescu, Dimitrie Zerva, Outbox Studio



Bricks, stone, wood and glass – the material referred to in the design also serves as the name for the conference room concerned. The color of the chair covers is chosen to match.



In addition to quality, a key role was played by the superior comfort, which is achieved by the spacious, ergonomically formed seat shell and the sprung frame.



If required, several meeting rooms can be combined to make one large seminar space. Any Metrik chairs not needed can then be stacked and parked compactly at one side (design: white ID).

Avex Building, Tokyo, Japan Interior: Obayashi Corporation
Photos: Shigehiko Kawai, Atelier G&B

A year prior to completion of the Avex Group's new, over 100-meter-tall office tower, its usage plans were fully revised to reflect new styles of working that promote collaboration and innovativeness. Instead of traditional offices, the interior designers produced hot-desking workspaces, studios, rehearsal rooms and a diverse range of collaborative spaces spread over the stories for the company from the entertainment industry. The Planner studio made the culture perceptible for top management too.



An exceptionally modern-looking sculptural table was designed for the boardroom. The Sola conference chair with rocking technology (licensed by Davis Furniture, design: Justus Kolberg) guarantees dynamic agility and its slim, linear design is impressive.

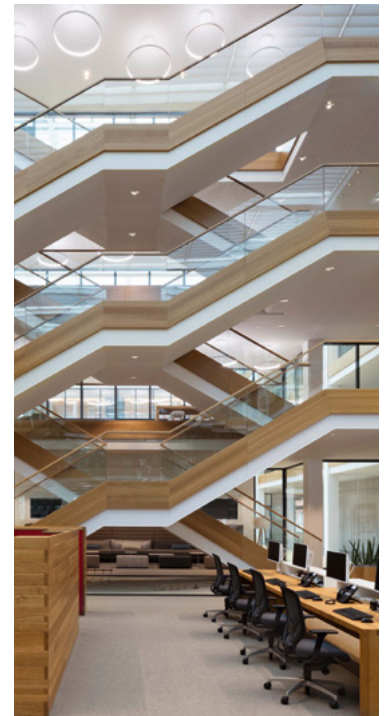


The very versatile Timetable tables (design: Andreas Störiko) with their flip-top table tops and foot sections that automatically turn in allow people to reconfigure the setting for a meeting or workshop.

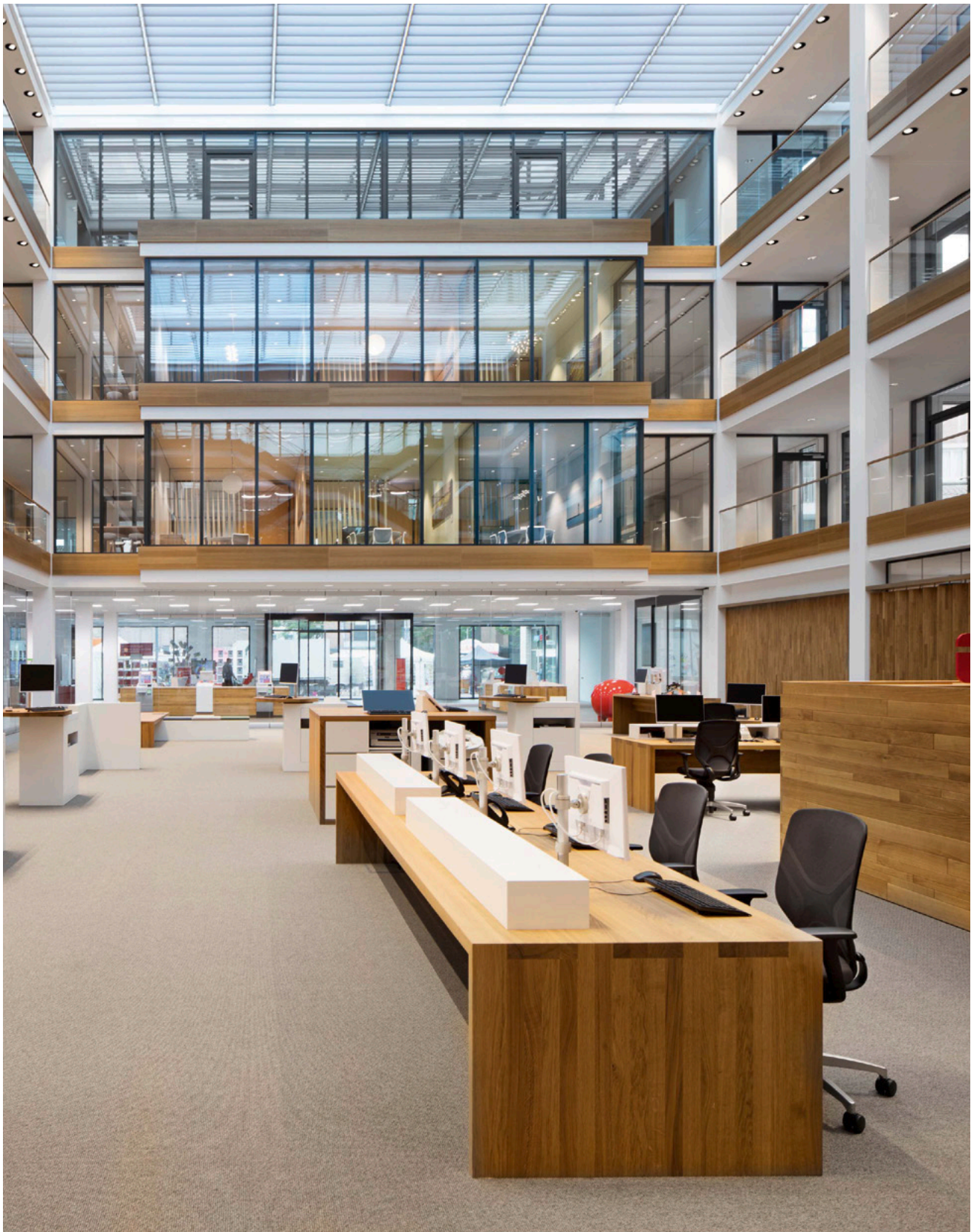


Sparkasse, LeerWittmund, Germany Architecture + Interior: Ellwanger, ellwanger menzel architekten
ingenieure gmbh
Photos: Werner Huthmacher

The architects discussed the interior design concept for the interior with the client. The goal was for the offices to be communicative, open spaces in order to foster team building and interaction. They also didn't want any hierarchies and specifically dedicated workspaces evident in the architecture, but placed emphasis on natural and high-quality materials, matte surfaces and a range of different working environments. The premises look professional but have the sort of comfortable, laid-back appeal that gives staff and customers the feeling that they are in good hands. The result is a prototype for the future of banking, which combines a high-tech infrastructure with an emotive appeal.



A shiny, white corner building connects the large-sized building with all its many windows and clinkered supporting structure to the new build. A distinctive, crisscrossed staircase takes center stage in the interior.

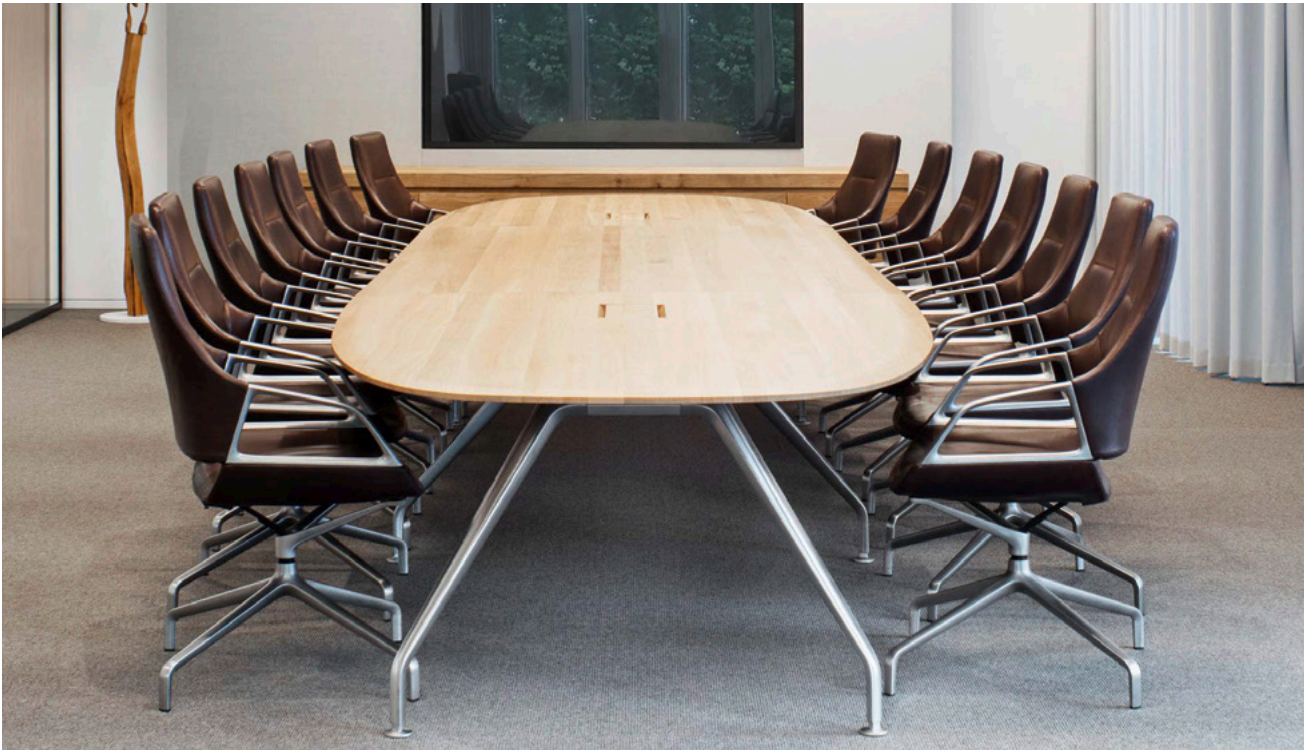


The large atrium, which is as tall as the building itself, is the customer service area. It lies at the heart of the new build and its combination of white elements and solid wood looks very attractive. The exceptionally motion-stimulating IN office task chairs (design: wiege) are placed at the customer-service terminals.

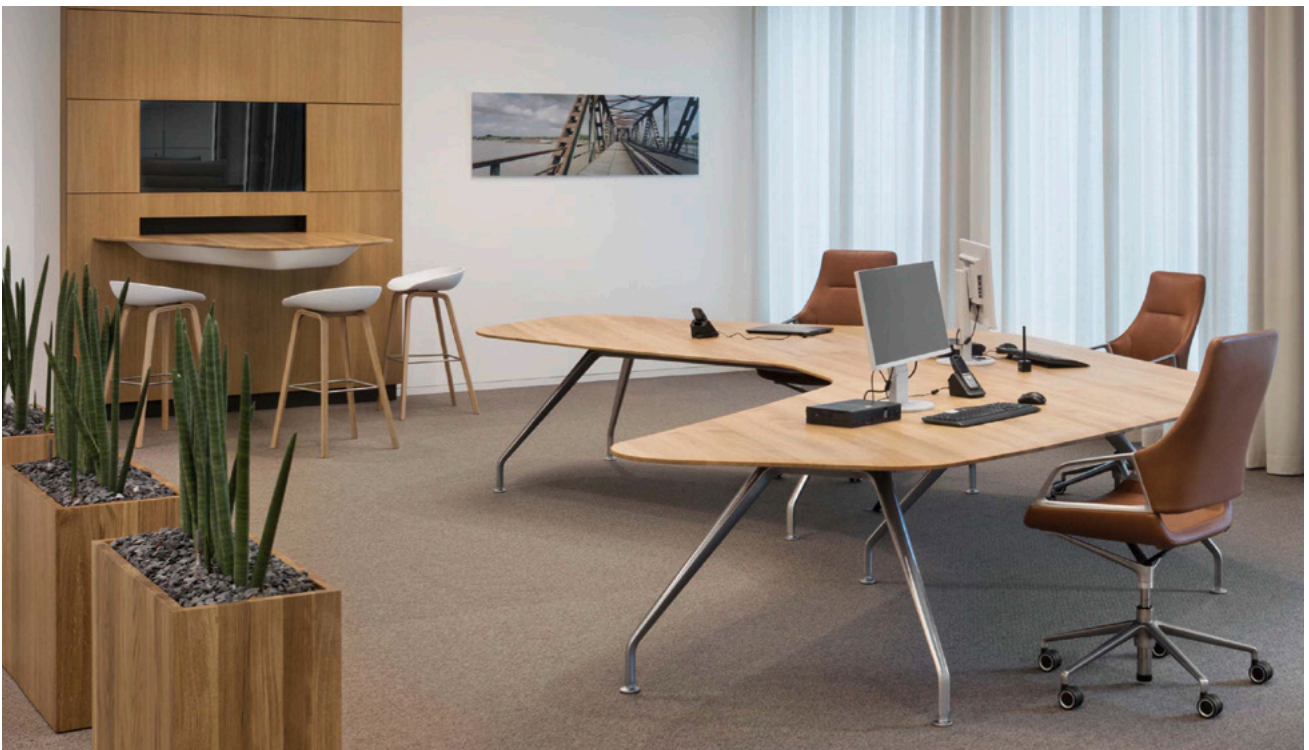


Due to the transparent inner facade, the surrounding offices and conference rooms look out onto the atrium. Here, white Graph tables (design: jehs+laub) are combined with Chassis chairs (design: Stefan Diez) in the same color.





The form, material and color scheme is the identical throughout. The small conference room comes with a Graph table with a solid oak table top and Graph chairs in brown leather (design: jehs+laub).



The emphasis is on teamwork here and three board members sit at a customized, crescent-shaped Graph table. Just like the conference room, the Graph chairs have casters so that they can be moved about.



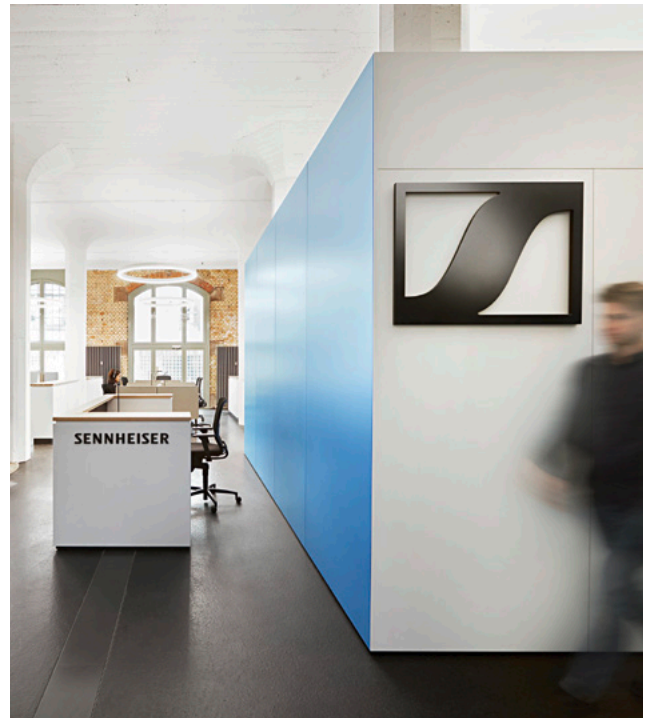
Staff in the communication spaces can pick different options to suit the task at hand. Similarly to the customer service area, IN office chairs (design: wiege) at desks allow people to keep moving intuitively.



The Graph conference table system for 32 people is in the shape of an open triangle. It was custom-made with solid oak panels and fitted to add multi-media capability too. The Graph chairs also stand apart here for the superior comfort and integrated, subtly organic form (design: jehs+laub).

Sennheiser, Zurich, Switzerland Interior: Gehri AG
Photos: Sennheiser / Gehri AG

The Innovation LAB for the renowned, German manufacturer of audio equipment in Zurich was constructed by acoustic experts and Gehri AG designers. The upshot was a superb place where new, immersive, 3D sound systems are inspected, tested and developed. The soundproof studio was installed in the middle of the office space without any negative impact on the people in the workspaces around it.



The Innovation LAB is located in a factory, which is a protected historic building and dates back from the turn of the 19th century. The industrial charm was maintained and the pillars were used to structure the bright and spacious open-plan office.



To prevent even impact noise and make the space fully soundproof, the room-in-room design has flooring that's totally separate from the rest of the building.



“We collaborated with the design team at Sennheiser Switzerland to come up with a simple, laid-back workspace, which blends in with the protected historical site from the turn of the 19th century. The fluid, understated lines of the designs by jehs+laub make the Occo chair an excellent choice for the new office’s design concept. The clever functionality of the IN work chairs, Timetable tables and lightweight Aline chairs with their excellent stacking capability are impressive for their comfort and versatility.”

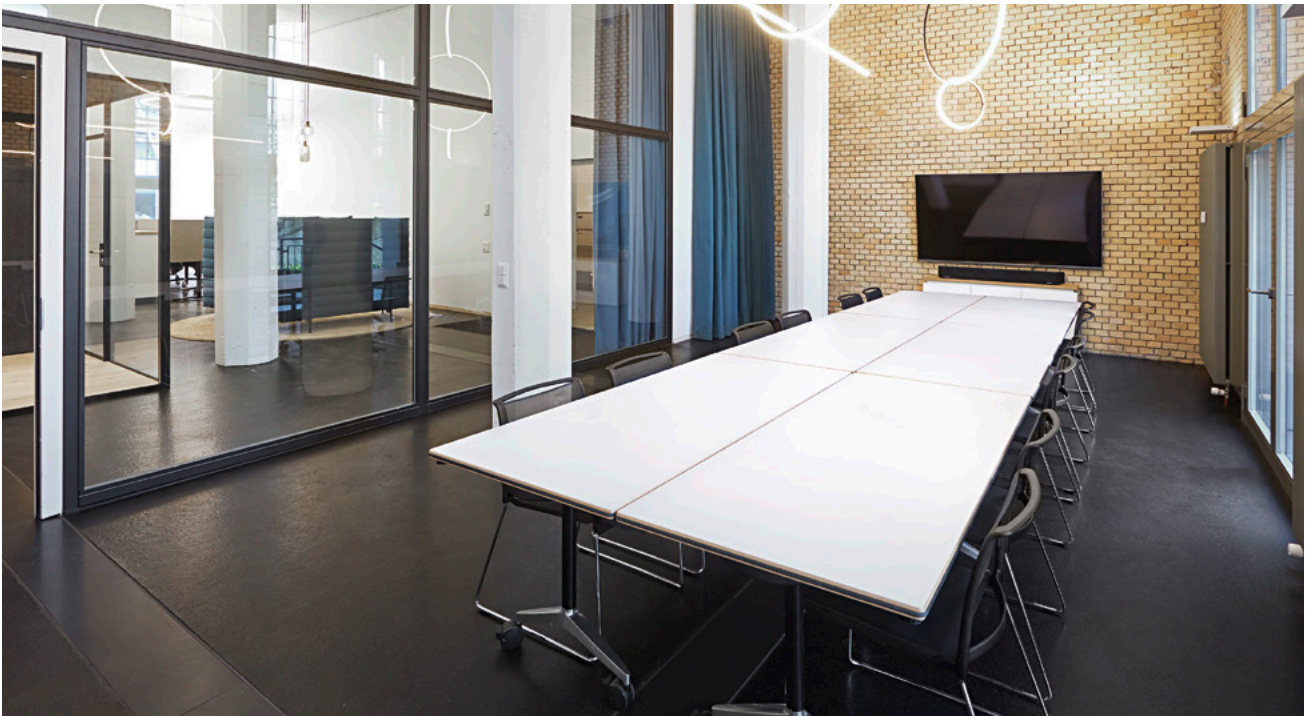
David Bernet, creative director at Gehri AG



In terms of ergonomics, the workspaces are outstanding quality with options to dull sound and provide privacy, height-adjustable desks and three-dimensional IN office chairs (design: wiege).



The variant with a five-star base frame and casters from the Occo multipurpose chair range (design: jehs+laub) goes well with the interior designers' functional and design concept in the appealing meeting room.



Mobile, flip-top Timetable tables and Aline stacking chairs were selected to ensure the conference room was as versatile as possible (both designed by Andreas Störiko). They are easy to handle and support dynamic and agile collaboration.

Brands of Scandinavia, Copenhagen, Denmark Interior: Paustian
Photos: Dennis Thanh

Interior design experts at Paustian came up with an office environment with strong black and white contrasts for the headquarters of the Danish Brands of Scandinavia fashion group in Kolding in the south of Denmark. The one-and-a-half story interior is covered by a pent roof, lending it a calm almost graphic look. Floor cushions, furs, pillows and vintage elements dotted about here and there are charming contrasts. Strips of lighting on the outside walls and the building's gable ensure the building has plenty of light throughout.



Just like the walls and doors, the large black and white photos amplify the impact of the vintage elements.



The open-space office is divided lengthwise into three areas that follow the building's roofline. The 32 workspaces are spread over workspace islands for two to three people.



The workspaces come with the Paustian WD01 work desk and a module to store essential office items in. The all-black IN office task chair (design: wiege) guarantees agile working with three-dimensional movement.

VR Bank Nord eG, Flensburg, Germany Interior: ebene03.büro für räume
Photos: Wini office furniture

This new build is by dl architekten PartG mbB for VR Bank Nord in Flensburg, Germany. The brick building is in keeping with the typical local style and impressive for the contrast between its dark, somewhat dignified exterior and the bright and dynamic interior. The central lobby is a 17-meter-tall, light-flooded atrium, with illuminated light rings that underscore the airy lightness of the space. Single flights of stairs cover the open space in the middle lead to spacious galleries all the way round, which provide access to the customer support spaces. Communication islands divide up these transit areas and provide opportunities for people to interact and stop for a quick chat.



The atrium has plenty of natural light and its translucent stairs, walkways and organically shaped light rings prompt people to give their legs a stretch. The 3D dynamic ON® office chairs (design: wiege) stimulate motion at the reception counter.



The customer-service areas are designed so that customers and advisors sit at the round table and everyone can see the large display on the wall. ON cantilever chairs to match the dynamic ON chairs (design: wiege) complement the setting.



The conference rooms with their dynamic, rocking Sola chairs (licensed by Davis Furniture, design: Justus Kolberg) and elegant Graph tables (design: jehs+laub) indicate the high regard in which the company's staff is held.

Taric WiseTech Group, Madrid, Spain Interior: Vega Ortiz
Photos: Juan José Cánovas

The headquarters of the Spanish affiliate Taric, which belongs to the Australian logistics software group WiseTech, are located in a protected historic building designed by the famous architect Secundino Zuazo in the 1950s. Consequently, Vega Ortiz carefully refurbished the rooms as open, versatile office spaces and, in some cases, also exposed the original materials used.



The original wooden flooring and the striking staircase were uncovered and, just like the windows, narrow strips give the glass partition walls structure. Four-leg, stackable Occo chairs (design: jehs+laub) ensure relaxed comfort.



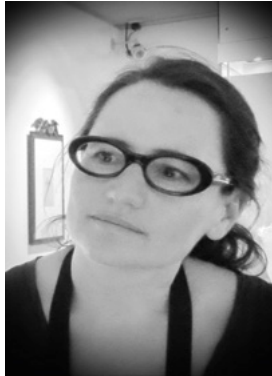
The exposed, load-bearing concrete structure is an expressive design element in the otherwise understated white and gray room structures.



Large tables with T-shaped bases can be used for single workspaces or project teams. The Neos office chairs (design: wiege) have different colored upholstery as accents and to indicate who is sitting where.



The slender, chrome-plated frames and otherwise white surfaces of the Sito cantilever chairs (design: wiege) and the Occo table (design: jehs+laub) underscore the bright, light-flooded atmosphere of the conference room.



“We selected the Neos office chair because it’s very comfortable and so superbly ergonomic that it can handle a range of different users. Its aesthetically calm design blends in subtly with the rest of the room. When the space is used for other purposes, the different colored upholstery shows people which chair is theirs.”

Vega Ortiz



Further workspaces are formed by understated, four-leg tables, which can regrouped as desired. The Neos chairs' upholstery covers, which extend over the backrest, make the colors identifiable from the rear too.



The room for innovations includes cube modules that users can combine to suit preferences, or Stand-up stools for a change of posture (design: Thorsten Franck).



Groups of height-adjustable desks for four are placed next to the facades and paired with dynamic 3D IN office chairs (design: wiege). Curtains provide privacy and shut out noise from the communal areas.

Scout 24, Munich, Germany Interior: Combine Design
Photos: Niclas Pütz

Combine Design was asked to create an inspiring environment for 800 workspaces in the new Leuchtenbergring Office complex of the provider of various online marketplaces. The team picked a concept based on the principle of activity-based working. They produced versatile, open spaces and communication islands on floorspace of around 8,000 square meters. The result was a nuanced office landscape with different zones for deep work, project teams, meetings and breaks all the way to interdisciplinary workshops.



People who spend hours in front of computer screens need consistent encouragement to move in different ways to keep physically and mentally fit. Which is why the studio selected the IN office chair (design: wiege), which translates the tiniest shifts in weight into movement.



The company café is considered an informal communications hub across all hierarchies. To foster the feel-good factor and interaction, practical Occo models (design: jehs+laub) are found here, which offer exceptional comfort and have the sort of appeal that wouldn't look out of place in homes.





Daylight, transparency and high-quality, carefully crafted, natural, warm materials bear testimony to the respectful and very professional way that resources are treated.

Tokyu Fudosan Holdings Corporation, Tokyo, Japan Interior: FLOOAT, Inc.
Photos: Nakasa & Partners

Tokyu Fudosan Holdings Corporation is the parent of several subsidiaries involved in project development, real estate and facility management. The head office's new design symbolizes the vision to shape the lifestyle of the future beyond real estate. Interior design agency FLOOAT, Inc. came up with a range of office environments to convey the company's new spirit.



Friendly, light colors and materials also prevail in the conference room. In this case, the designers picked a Graph table configuration and Graph chairs (design: jehs+laub), which blend in with the organic design.

Stadtwerke Neubrandenburg, Germany Interior: Petzi + Petzi
Photos: Andreas Muhs

Architects Petzi + Petzi's remit for the utility in Neubrandenburg was to create a new customer-centric, versatile service center with a modern feel-good factor. They pulled out all the stops to translate the corporate design into three-dimensional interiors to allow the area to be used for a wide range of purposes, both during busy and quieter periods.



At around 100 square meters, the customer center with its large service area has huge windows that look out onto Neubrandenburg's Market Square at the heart of the eponymous town in Mecklenburg-West Pomerania.



Workspaces and customer-service sections are located in the back room, which can be partitioned off, and along the side walls. The open sections on the seat shells of the white, swivel-mounted Occo conference chairs (design: jehs+laub) echo the organic cut-out sections on the walls.



The L-shaped counter offers a point of contact, a place to work or provide customer service. It has white counter stools from the 3D AT range (design: Wilkhahn) and color-matched bar chairs from the Occo range (design: jehs+laub).



The middle of the room has items of seating designed by the architects themselves. Cubes in different sizes, some of which are upholstered and some not, form sectional seating. These can be regrouped or moved out of the way again.



“We selected Wilkhahn seating because the elegance of both AT task chair and Occo were a perfect fit with our design. The ergonomic AT office chair also encourages staff to move intuitively, therefore helping to keep them fitter and underscoring our client’s brand values. In contrast to other task chairs, AT also comes in white, which boosts the clarity of the impression given by the space and matches the utility’s corporate design superbly.”

Jens Petzi



In the conference rooms, meeting participants sit on AT office chairs (design: Wilkhahn), in which freedom of movement is combined with automatic weight adjustment to minimize the time taken to change settings.

Otter Products, Hong Kong Interior: Spatial Concept
Photos: Scott Brooks

The American company, which specializes in device protection products for smartphones and tablets, moved its offices in the center of Hong Kong to the suburbs. The designers created a place in which brand identity is even more strongly emphasized and fosters growth, innovation and job satisfaction at the same time. This space encourages movement, offers a view of Victoria harbor, daylight right into the building's core and a colorful and modern interior, all of which pay dividends in terms of healthy and happy employees.



The IN office chair (design: wiege) was chosen for the workspaces. It doesn't just offer an exceptionally wide range of motion, it's yellow-black color combination echoes the company's corporate design.

Lijncom, Melle, Belgium Interior: Art Nivo
Photos: Valerie Clarysse, Beeldpunt

Ad agency Lijncom has given itself a fresh, new brand identity. It has moved its offices to a location just outside Ghent in Belgium and into a space where the old fabric of the building is combined with a modern extension. The workspaces are complemented by huddle spaces, project islands and rooms for different functions. The design is dominated by shades of white, gray and pink, with occasional black elements as accents. The company furnishing Art Nivo designed the modern offices as cocoons, where old and new are married with each other and the “building is given a soul”.



A black edifice was added to the historic red brick building in the German municipality of Melle. Architectural contrasts are equally played with in terms of the color scheme for the interiors.



In the bright atmosphere, in which white, gray and natural tones prevail, the all-black IN office chairs (design: wiege) with their dynamic silhouettes and their X-shaped backrest supports really stand out.



The office chairs are moved from table to table, grouped for meetings, or stand alone at desks. Their superior 3D capabilities prompt users to adopt healthy dynamic sitting and agile work styles.

MMoser Associates, New York, US Interior: MMoser
Photos: Eric Laignel

The architectural studio is a global player specializing in office worlds. It designed its New York office on the 24th story of the neo-Gothic Woolworth Towers to act as a lab conducting research into agile working processes for tomorrow's world. Based on extensive surveys, interviews and occupancy studies, the office concept is all about hot desking, mobile devices and collaborative spaces. The reception is in the form of a lounge that resembles a café and each workspace or break-out area has its own identity – from the homely ambiance of the presentation room to the almost private dining room atmosphere in the conference room to the workspaces' down-to-earth character.



Spacious communication areas with different types of seating and interactive presentation screens define the future-driven, open spirit of the living labs, where all documents are digitized.



Wilkahn's Neos cantilever chair (design: wiege) is located in the conference room, which has the sort of design that wouldn't look out of place in homes. With its light upholstery and distinctive outer rail, Neos creates a fresh pop of color in the sophisticatedly dark space.



With its mobile desks and 3D ON office chairs (design: wiege), the workshop is the centerpiece of the office, which gained the WELL Building Standard's platinum certification because of the healthy way it stimulates movement.



The conference room with Graph conference chairs and a Graph conference table (design: jehs+laub) look out onto Amsterdam's skyline. The haptics, comfort and design language are exceptional feel-good factors.

NautaDutilh, Amsterdam, the Netherlands Interior: Casper Schwarz Architects
Photos: Peter Blaas

International law firm, NautaDutilh, called itself a friendly powerhouse during a briefing about the design of its new headquarters in Amsterdam. Casper Schwarz Architects translated this leitmotif into multi-faceted interior design. For the two stories, which are connected by a spiral staircase, they designed different rooms and atmospheres, in which a subtle combination of prestige, warmth and artistic expressiveness is always displayed differently.



This conference room features a table with a base and state-of-the-art multi-media equipment fitted to it. The Graph chairs go perfectly with the materials and color scheme, which is based on materiality and top craftsmanship.



The spacious training and seminar room is bathed in light and furnished with the versatile, classically stylish Contas table system (design: wiege, Fritz Frenkler, Anette Ponholzer). The company picked the stackable, generously sized ON cantilever chairs (design: wiege), which are covered in different colors, as the seating.



“We were looking for a first-class conference chair for the prestigious-looking conference rooms. We wanted a chair that manifested the same appreciation and regard for the client as NautaDutilh has for its own work ethic. At the same time, we wanted the style of the chair to match the classy, organic architectural language of the building and the interior design. And Wilkhahn’s Graph does both to perfection.”

Casper Schwarz, CEO of Casper Schwarz Architects

human unlimited, Düsseldorf, Germany Interior: Claudia de Bruyn, two_space + product
Photos: Peter Kalte

Düsseldorf-based agency, human unlimited, promises to come up with a company's purpose in just 100 days. To underline this pledge in terms of space, the interior design studio chose an unusual concept for the premises, which is showcased with the three primary colors of cyan, magenta and yellow from the CMYK color model. As symbols of purpose, engagement and leadership, they generate strictly demarcated, monochrome zones in each of the communication areas, while the workspace in the center features white flooring and black ceilings.



The dividing line between the themes of purpose and the magenta-colored engagement runs through the walls, ceiling, table, floor and seating. This demonstrates the different dimensions.



“AT’s striking design and top quality were what impressed us most of all. Its fluid lines lend it a lightweight, delicate appearance. Its functionality is cleverly concealed and only apparent in the intuitive way the office chair is handled. And in terms of purpose, it was easy to pick Wilkhahn because AT is a good example of how sustainability can be holistic - because the company’s products last and last and are made in Germany.”

Claudia de Bruyn, two_space + product
(Photo: Anne-Marie von Sarosdy)



The lampshades that are black on the outside and in a reflective white on the inside connect the ceiling with the table, while the white frame and shell structure of the AT office chairs (design: Wilkhahn) create a link between the floor and the ceiling thanks to their black upholstery.



The desk spaces are in neutral black and white and are the link between the three colored meeting areas. The exceptional range of motion offered by the AT chairs (design: Wilkhahn) make their users fitter and more creative too.



Sparkasse, Bielefeld, Germany Interior: brüchner-hüttemann pasch bhp
Photos: deterringdesign GmbH

The Sparkasse bank's headquarters were completed based on architect Hellmut Streich's plan by 1977. The concrete building is typical of the era. After the building had been in use for 40 years, an architectural studio was appointed to modernize the cashier section, conference room and the bank's restaurant and café. They created clearly marked zones and used light materials, colors and lots of glass to engender a feeling of transparency and space. Large-sized furniture, such as the reception counter or islands of seating, lend the space structure. Different types of material in the flooring and ceilings help people to find their way about intuitively. The result is a modern atmosphere that is very pleasant to be in.



In the company restaurant, Occo chairs (design: jehs+laub) with black or white seat shells, as well as solid oak legs or chrome-plated, swivel-mounted frames match the materials and colors of the flooring.



The chairs in the middle section, where items of furniture are scattered about, feature seat cushioning in the red corporate color to match the round carpeting, the shape of which is reflected in the lighting.



The auditorium is a rectangle, which can be partitioned to enable different settings. The white Sito cantilever chairs (design: wiege) with gray and the occasional red covers indicate the Sparkasse's corporate design.



Different types of lighting, flooring and large items of stationary furniture – such as the benches shaped like brackets here – give the room structure and help people to find their way around.



The architects chose the stackable Sito cantilever chair (design: wiege) for the multipurpose conference and seminar center because the furniture is based on bridge construction and offers comfortable suspension.

CBRE The Core, Amsterdam, the Netherlands Interior: CBRE
Photos: Stijnstijl Fotografie

A 50-year-old, former Peugeot workshop called The Core is the headquarters of the world's biggest service provider in the Netherlands. The workshop architecture with its loft-like charm has been retained. The building is divided into four separate zones, each of which has a unique look. The café is a meeting place for customers and colleagues, the workshop with its project tables and break-out areas encourages interaction and innovation, the client lab is for collaborating with customers and the library an oasis of calm and focus.



Thanks to the saw-tooth roofs, the building is full of daylight. It was developed to comply with the Well Building Standard, which, in addition to ecological aspects, also fosters the health and well-being of people in the building.



The classic 3D ON office chair (design: wiege) and the AT office chair (design: Wilkhahn), which combines a free range of motion with automatic weight adjustment, are core elements of the project workspaces.



“CBRE’s The Core in Amsterdam is all about keeping people fit and healthy. In addition to the aesthetic, the decision to pick Wilkhahn’s work chairs for this environment was a logical one because this very ergonomic chair helps our staff to adopt a healthy posture.”

Ramon Beijen – creative director at CBRE



Lots of green plants, which flourish in the glass buildings, and the activity-based concept for the workforce, which the AT chairs (design: Wilkhahn) also encourage, make this a popular place to be.





With its wall panels and lush green wall, the lobby is an exceptionally pleasant place to be. The designers chose sofas, chairs and side tables from the Asienta range (design: jehs+laub), combining generous upholstery with stylish and delicate frame structures.

Chesser House, Adelaide, Australia Interior: mph architects
Copyright Mossop Construction + Interiors
Photo: Ross Williams

While the base of Chesser House with its brick facade dates back to colonial times, the 12-story, monolithic office block with its reflective, blue glass facade is a legacy of postmodernism. The redesign of the facade and lobby in the plinth building, which juts out at the front, produced a modern reception area and boosts the identity of the whole ensemble.



The interactive lightbox, which appears to float above the entrance, is a particular eye-catcher. At nighttime, its alternating colors shine out onto the street and it also attracts people's attention to the interior.

Corestate Group, Frankfurt, Germany Interior: Interior design studio LESON GmbH
Photos: Martin Joppich

Tower 185 has LEED sustainability certification and was designed by architect Christoph Mäckler. It's the fourth tallest high-rise building in Germany together with the Main Tower. The interior designers came up with a very attractive working environment for the Corestate Group. The offices are impressive for their spectacular views and the fact that they reflect the company's values. A range of muted blues in the corporate design contrast with natural tones, wooden windows and vertical, miniature gardens. Floor-to-ceiling glass partitions create transparency and add to the feel-good factor.



Glass walls provide daylight to the conference rooms on the inside. The colors of the shells and seat covers on the swivel-mounted Occo conference chairs (design: jehs+laub) differ to match the natural mix of colors in the flooring.



The café invites people to come chill for a while and chat to others. The swivel-mounted Occo chairs are also positioned at the round table and four-leg chairs with oak base frames are encountered on the living wall at the front.



Shades of the blue on the walls are reen countered in the carpeting of the white-walled meetings rooms. The seat cushioning shells and covers on the Occo task chairs (design: jehs+laub) were adapted accordingly.



The view over the city, the small fitted kitchen, the bright and natural design and the comfortable Occo chairs (design: jehs+laub) offer an oasis of calm and relaxation during a high-octane working day.



Stibbe, Amsterdam, the Netherlands Interior: Fokkema & Partners Architecten
Photos: Horizon Photoworks, Bram Vreugdenhil

With over 400 associated attorneys, 190 of whom are located in Amsterdam, Stibbe is one of the biggest and most well-known law firms in the Benelux region. The ten-story new build, designed by Jo Coenen Architects & Urbanists (JCAU), features a triangular atrium, which is topped by a prism-shaped skylight. For the bright building, Fokkema & Partners opted for an interior design concept that emphasizes the link between each of the rooms via open sections and visual elements and showcases the spectacular views over the city.



The interior designers underscore the geometry inherent in the structure by using similarly shaped soundproofing elements. The impressive, steel supporting structure is showcased to perfection.



The offices and meeting rooms, which can be reserved online, have sophisticated revolving doors that open symmetrically and allow a glimpse inside or total privacy if required.



The law firm's employees spend a lot of their time in meetings and consultations. Which is why the mobile conference chairs from the Graph range (design: jehs+laub) are used in all different spaces.



The panoramic view from the raised, oblong penthouse floor is breathtaking. Here, the Graph conference chair's soft leather cover in natural tones provides a subtle contrast with the high-pile, sound-absorbent carpeting.



Deutsche Rentenversicherung, Laatzen, Germany Architecture + Interior: struhk architekten und Planungsgesellschaft mbH
Photos: Frank Schinski

The new building can accommodate 1,150 people (1,026 of whom work in offices). The building consists of two rectangular structures that are offset and connected with a glass link. Up to five stories with light-flooded offices for one to six people and several conference rooms are located above the first floor with its catering area, library and conference spaces. This appealing office is clearly defined by basic modules and is a bright, friendly and inspiring atmosphere to work in.



Green spaces, patios and courtyards outside in front of the structured facades invite people to go for a walk during breaks and interact with others in the fresh air.



Stackable Neos cantilever chairs (design: wiege) and mobile Timetable tables (design: Andreas Störko) are used in the multipurpose conference and seminar space in order to maximize versatility and speed up the time required to reconfigure settings.



Power supply and multi-media connections are fitted to the attractively designed tables. Thanks to their flip-top table tops, they can be transported easily through the building and nest into one another compactly.



Stacking trolleys make moving the Neos cantilever chairs and storing them in a space-saving manner effortless. The tapered seat shell allows precise, self-centering stacking.



Inline connectors don't just link up the tables, simple plug-and-play connectors make attaching power and data cables very easy.



It takes just one person to transport the tables quickly from room to room, take them to different stories via an elevator, assemble, disassemble or store them in no time at all.



The combination of seminar areas, which can be partitioned in various ways, with Neos stacking chairs (design: wiege) and Timetable tables (design: Andreas Störiko) means that space can be used extremely sparingly and facility management costs are manageable.

Fidelis Insurance, London, United Kingdom Interior: Advanced Interior Solutions
Photos: Neil Kenyon

The Leadenhall Building by architects Rogers Stirk Harbour + Partners is located in the center of London's Square Mile (or financial district). It's a skyscraper and jokingly called the cheese grater by Londoners because of its shape. One of the tenants is Fidelis Insurance which has offices with floor space of roughly 900 square meters on the 34th story. For the executive offices and conference rooms, the designers chose an interior in keeping with the building's location and the seniority in the hierarchy of the people using the rooms.



The 34th story gives the insurance company's management board a sweeping view over London's skyline.



The meeting spaces have tables with sophisticated, shiny surfaces and Graph conference chairs (design: jehs+laub) with covers made of special gray-blue suede.



Depending on the amount of daylight, the reflective table surfaces and the colors of the covers that match the exterior create very special effects.

Wortmann KG, Detmold, Germany Interior: Antje Pegger for Wackerhagen GmbH & Co. KG
Photos: Wortmann KG

Architect Andre Rohde remodeled an old warehouse into a state-of-the-art office for the footwear corporation. The warehouse roof was raised by 80 centimeters and three galleries were added due to fire safety regulations. The fire walls' bricks, as well as pipes and other structures are exposed and the lighting and carpeting have an industrial flair. The interior design concept prompts more physical activity within the departments and makes it easier for the sales, marketing and accounts teams to liaise with one another.



Due to its athletic design and three-dimensional range of motion, the IN office chair (design: wiege) is perfect for the communication-driven and engagement-focused concept.



The high tables are paired with Stitz (design: Produktentwicklung Roericht), the classic sitting-standing stool, in the meeting spaces underneath the partially glazed galleries.



Sectional seating, sofas and a picnic niche invite people to stop and talk to one another. And anyone who stops to chat can just grab one of the colorful Stand-up stools (design: Thorsten Franck) scattered about.



Worldwide Mining Company, Perth, Australia Interior: Woods Bagot
Photos: Dion Robeson

A lot of mining companies are headquartered in Perth, western Australia. One of them is located in one of the most striking high rises at 108 St George's Terrace. It doesn't just offer a splendid view over the city, but also an unusual interior design concept, where communication and collaboration are the focus. The design concept showcases natural and technical materials. For example, the attractive staff café has ceiling paneling made of punched bands of steel.



In the lounges, the chairs, sofas and side tables from the Asienta range (design: jehs+laub) combine comfort with style and are a symbol of the high regard in which staff are held.



The upholstered benches with backrests in the café are matched with stylish, square Aline tables (design: Andreas Störiko) and Chassis chairs (design: Stefan Diez) are placed at large dining tables, which are dotted about the room.



The Asienta range (design: jehs+laub) with its slender frame structures and stylish upholstery are used in the meeting room, which becomes an ideal backdrop for informal meetings.



To ensure managers' mental agility and comfort, Graph chairs with high backrests (design: jehs+laub) are placed at the semi-oval conference table system, which comes with all the state-of-the-art multimedia equipment required.



HRS, Cologne, Germany Interior: Lepel & Lepel
Photos: HG Esch

The open-space construction and grid-like look of the Coeur Cologne's facade, designed by MSM Meyer Schmitz-Morkramer architects, looks both dynamic and exciting. This is the location of the headquarters belonging to the global hotel portal service provider HRS Group, whose slogan is We Like to Make it Happen. Each story represents another continent, which is referenced in the interior by splashes of color, materials, patterns and characteristic visuals. With its open space layout, phone booths, lounges, creative workshops and huddle rooms for teams and meetings, the concept embraces the whole range of today's office environments.



The highlight is the building's approximately 20-meter-tall lobby, which stands out as a four-story window within the metal/glass facade overlooking the city and symbolizes the interaction between outdoors and indoors as the quintessence of the design.



The open stories incorporate areas, such as niches where people can withdraw to for meetings. Alongside the nuanced range of rooms, IN office chairs at the workspaces (design: wiege) ensure frequent changes of posture.



Vacations are much more fun in the right hotel. IN (design: wiege) is the right chair for the sales agents' office because the furniture encourages them to engage in three-dimensional dynamic sitting and keep body and mind alert.



Colors, visuals and materials indicate the different areas and the continent concerned. A workshop zone with a rostrum and wall that can be written on has been built into the story's open-plan structure.



Grant Thornton, Melbourne, Australia Interior: Geyer
Photos: Shannon McGrath

On floorspace of 7,000 square meters, the design of the new offices belonging to the global network for management consultancies in Melbourne underscores the corporate values of collaboration, swapping expertise and learning. An inviting and relaxed interior with a selection of different spaces was created for co-workers, guests and clients, who, after all, lie at the heart of what the company does. These rooms range from first-class, ergonomic workspaces and multifunctional event areas to conference rooms fitted with all modern conveniences, small, personal meeting rooms and open interactive zones all the way to a barbecue space and garden for cups of coffee al fresco.



The versatile seminar rooms are impressive for their first-class equipment and furnishing concept. Their mobile, Sola conference chairs (licensed by Davis Furniture, design: Justus Kolberg) ensure dynamic comfort and the legendary Confair folding tables (design: Andreas Störiko) allow fast table reconfigurations.

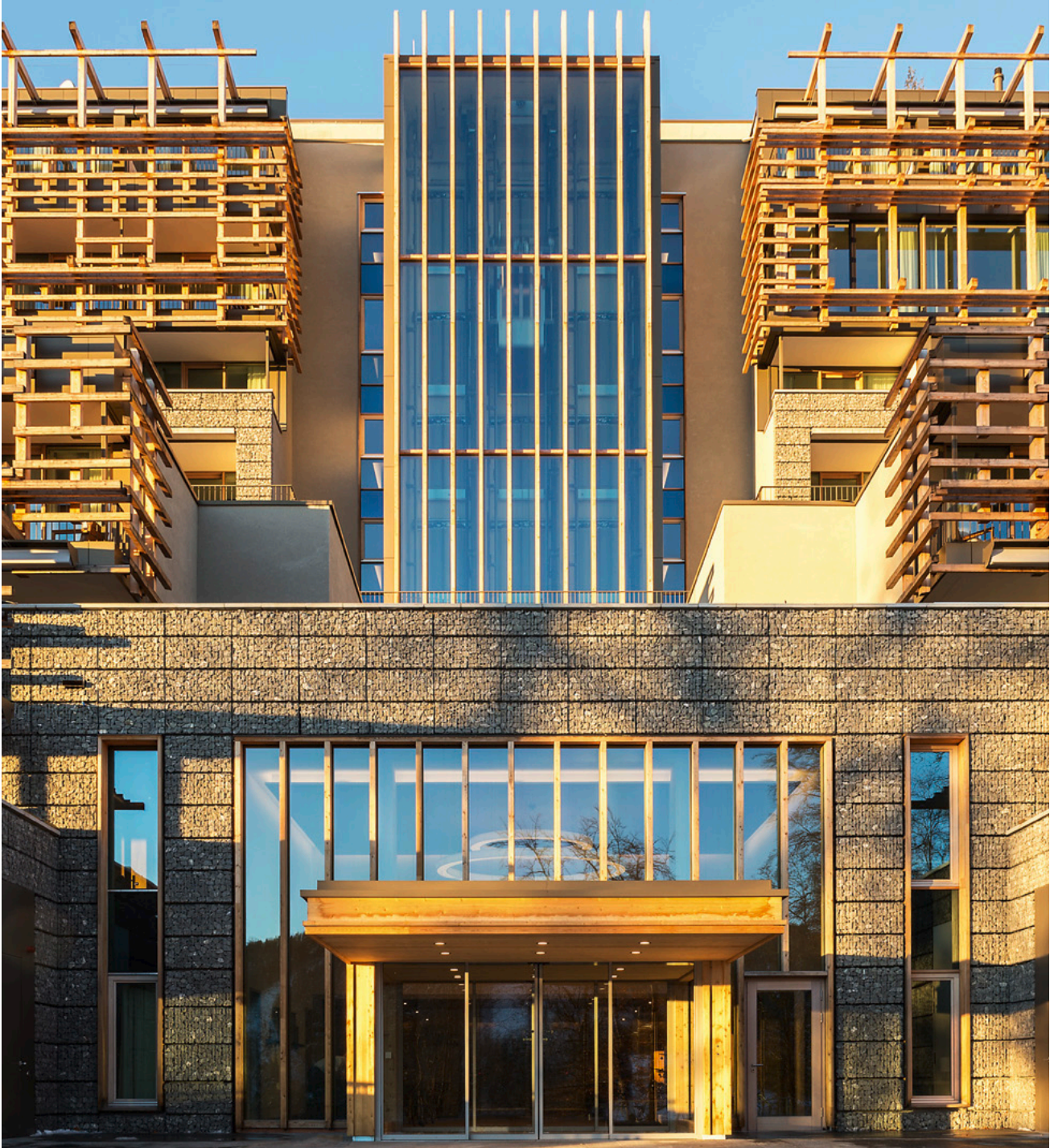


IN office chairs (design: wiege) are used in workspaces where people primarily work at computers. The chairs' vast, three-dimensional range of motion keeps their bodies fit and healthy.



In addition to the all-black IN office chairs, the electrically height-adjustable desks prompt users to alternate frequently between sitting and standing and are the state of the art in terms of ergonomics.

Hospitality



Waldhotel Health & Medical Excellence, Bürgenstock, Switzerland Interior: Identi AG
Photos: Bürgenstock Hotels AG (on the left); Beat Krättli for Identi AG

The Waldhotel offers healthcare services in its five-star complex high above Lake Lucerne. The terraced new building (architect: Matteo Thun) with its gabion facade, wooden pergolas and green flat roofs blends into the alpine environment. On floorspace of over 4,000 square meters, the Medical Health Center's offering ranges from conventional medicine to natural healing methods, a spa and gym. To emphasize the space's role as an outpatient health center, the interior designers created a professional yet welcoming look and feel.



The Medical Center picked comfortable Occo task and four-leg chairs (design: jehs+laub) for its treatment and consultation rooms so that people feel comfortable while they are sitting down too.



“The center wanted the high quality of the building and the office furniture to be reflected adequately in the seating too. With its fresh, outstanding design, Occo’s polypropylene shell also meets the medical sector’s hygiene standards. Neos also blends in, offers all the functions required and is comfortable as well.”

René Freivogel and Simon Regli



The swivel-mounted Occo conference chairs (design: jehs+laub) are also used in the conference rooms. In addition to their sophisticated appearance, the distinctive cut-out sections in the seat shell give the chair sprung comfort.



Healthy staff are also top priority. Which is why the workspaces with their electrically height-adjustable desks and Neos office chairs (design: wiege) meet the most discerning of ergonomic requirements.

Die Sandburg hotel, Langeoog, Germany Interior: Rainer Schilling
Photos: Leuchtende Hotelfotografie, Thomas Haberland

Located on the car-free North Sea island of Langeoog in Lower Saxony's Wattenmeer National Park, the Sandburg hotel offers laid-back luxury to both vacationers and business customers. With its white, classy supporting structure and horizontal ribbons of balconies, the facade is reminiscent of the wooden architecture of oceanside resorts in days gone by. Toward the ocean, a roof patio with an 18-meter-long pool offers a splendid view of the North Sea beach, which is only separated by a sand dune. The designers wanted to create a cozy atmosphere with a modern twist for the interior. The guest rooms and restaurant are all about appealing, light wooden surfaces, colorful paneling on the walls and clear forms.



The symmetrical facade with its terrace, porches and pagoda-like roofs looks like a typical, German oceanside resort on a boardwalk.



The family suites are impressive for their practical fixtures and fittings in warm materials and a clear design language. The compact Occo chairs with their slender seat shells and solid oak frames provide a high level of comfort at the dining table.



The seminar room has first-class and very versatile furnishing in the shape of Confair folding tables (design: Andreas Störko), Metrik cantilever chairs (design: White ID), a flipchart and lectern (Confair range, design: wiege, Fritz Frenkler, Justus Kolberg).



The top restaurant's furniture can be adapted for different purposes such as breakfasts or a candlelight dinner. The comfortable Occo shell chairs with oak legs (design: jehs+laub) offer laid-back comfort for anyone.



EM Systems Co., Ltd., Osaka, Japan Architecture + Interior: Nikken Sekkei Ltd., Nikken Space Design Ltd.
Photos: SS Kikaku Inc.

The sustainable and earthquake-proof Shin Osaka Brick Building with its ecological, brick facade is the headquarters of the company that specializes on IT solutions for pharmacies, clinics and other healthcare facilities. In addition to offices, the building also has facilities that provide diagnostics, pharmaceutical and medical services. And there's also a prestigious conference center whose rooms are also available to rent.



The team picked Intra (design: Phoenix Design) with a high backrest as the conference chair. The mobile chair has concealed synchro-adjustment capability, which automatically adapts to different users and allows both comfortable and dynamic sitting.

The interior designers created a new superior meeting room with its own reception area and lobby for board and management meetings or press conferences. The conference room for 20 attendees and nine observers has the same brick cladding that the building owes its name to. These bricks generate a warm and cozy atmosphere, improve the acoustics and convey the location's strong identity. Video conferences can also be held here thanks to cutting-edge, wireless multimedia technology and two large high-end displays.



Hotel Zeitgeist, Vienna, Austria Interior: Gerald Kolm
Photos: Stephan Huger | studiohuger.at

The hotel, located near the train station, is considered one of the most attractive in Vienna. To create a perfect feel-good atmosphere for conferences and large festive occasions, the redesigned mezzanine goes that extra mile. The result is a stylish, appealing atmosphere with natural materials, high-quality furnishings, state-of-the-art sound and lighting technology and first-class tables and chairs for up to 140 people. The sizes of the rooms and the fixtures and fittings offer a maximum of flexibility.



In the city center but still outdoors: In addition to the conference rooms, the mezzanine also has a stylish patio, where weatherproof Sitzbocks (design: Rudolph Schelling Webermann) invite people at conferences or weddings to mingle.



Alongside large seminar and conference rooms, a small meeting room is encountered behind a digitally printed glass wall and furnished with the versatile Versa table range (design: Wolfgang C.R. Mezger) and Occo task chairs (design: jehs+laub).



The comfortable Metrik cantilever chairs with their sculptural look (design: WhiteID), the wood edging of the Confair folding table (design: Andreas Störiko) with their impact-resilient profiles and the fabric-covered Stand-up stools (design: Thorsten Franck) lend the space a professional yet home-like appearance.



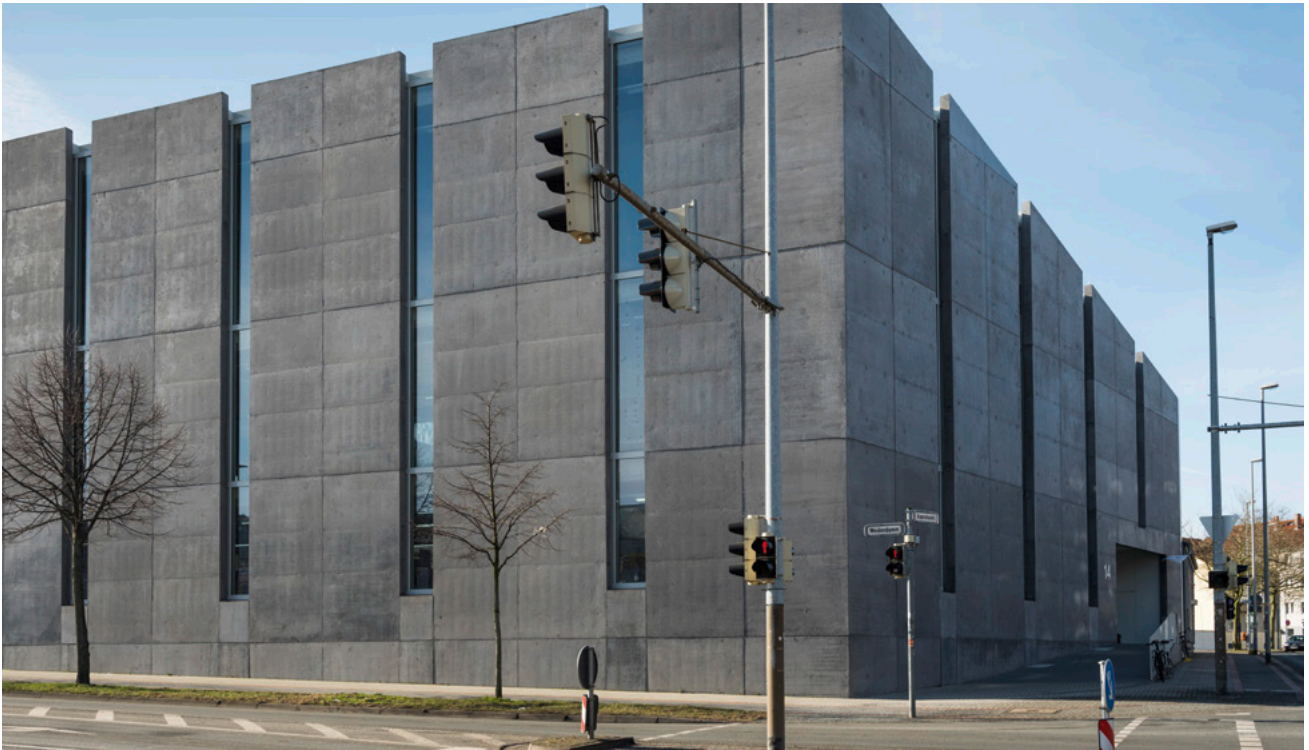
Timetable Lift (design: Andreas Störiko) is used as the moderator's desk. It features battery-operated height adjustment so that it can be raised for standing-up meetings and its flip-top table top doubles as a magnetic whiteboard that can be written on.



“We were looking for seminar and banquet tables that we could transport in our relatively small elevators, and chairs that would be suitable for both seminars and evening functions. We were very impressed with the flip-top tables’ excellent quality and functionality. When we factored in the reconfiguration costs and the man hours, Wilkhahn’s products came top. Our guests love the furniture and our co-workers are delighted that it’s so easy to handle. And that’s what really counts.”

Gerald Kolm, CEO





The building (Mensing Timofticiuc architects) won Lower Saxony's State Prize for Architecture. It's lower toward the back and the arrow-slit windows make it resemble an impregnable modern fortress on the outside.



On the inside, the U-shaped building with its glazed facades opens up to the spacious, communal inner courtyard. In good weather, it's used as somewhere to eat and drink, work or hold events in.

Hafven co-working and Maker Space, Hanover, Germany Interior: internal design team

Photos: Frank Schinski

Art installation: Quintessenz

Hafven was born when a co-working company and a maker space merged. Today, it's one of Germany's most innovative labs for new ways of conducting business and working. The first story is home to the public café and professionally fitted-out workshop space and the second and third floor accommodate offices. The building's red shell symbolizes interior design as work in progress, which is shaped, if possible, by the users themselves and produced, trialed and adapted in the workshop. It's always fluid and never completely finished.



The open space area is for people to collaborate and mingle. Exceptionally hard-wearing IN office chairs (design: wiege) and the legendary FS-Line (design: Klaus Franck, Werner Sauer) are parked at the desks, whose trestles and table tops were made by Hafven itself.



The workshop features furniture made by the team from the co-working space as well as Stitz sitting-standing stools (design: Produktentwicklung Roericht) and FS office chairs (design: Klaus Franck, Werner Sauer). The Wilkhahn chairs date back to the year 2000. Secondhand versions were purchased in 2011 after the merger and have now been given a face lift with new shells and upholstery.



The idea space is one of the most popular rooms. Thanks to folding Confair tables and stackable Aline sled-base chairs (all designed by Andreas Störiko), people can reconfigure the setting themselves for workshops and projects.



The silent space can be reserved for those seeking peace and quiet. A wooden gallery, developed and produced by Hafven itself, creates a second level in the space with its sloping floor. Desks and FS chairs are positioned at the bottom, or people can climb the stairs and relax in the gallery at the top.

Hotel ÜberFluss, Bremen, Germany Interior: Concrete Amsterdam
Photos: Michael J. Rüttger

ÜberFluss, an unusual designer hotel (Kastens + Siemann architects), is located to the west of the town center and looks over the Weser river. The hotel offers luxurious rooms, suites and apartments, a spa with a pool and facilities for conferences and events. The sixth story has a conference and event venue with two rooftop terraces, a private bar and lounge for up to 40 people. The second story also has space for up to 60 people who can enjoy a view of the river through floor-to-ceiling windows. The design concept incorporates traditional and vintage pieces, as well as exquisite materials, for a backdrop that leaves a lasting impression.



On the Weser side, the building appears to be divided into three separate ones whose dimensions are the same as the original sizes of the land. And a historic facade is, of course, integrated in the crisp, modern cube-shaped edifice.



The top story can be used for all sorts of purposes. The fitted leather benches on the wall are a charming contrast with the classically elegant shapes of the mobile Timetable tables (design: Andreas Störiko) and the Occo shell chairs (design: jehs+laub).



The mobile flip-top tables with foot sections that turn in and the stackable chairs are also used on the second story. The furniture can be adapted or stowed away in an instant.

L'Osteria, Munich, Germany Interior: Axel Frey Innenarchitektur + Design
Photos: Reiner Hoffmann

System-catering company L'Osteria owes its success to authentic, Italian cuisine enjoyed in a relaxed, inviting atmosphere. The interior designer developed a concept for the Munich-based headquarters that translates the welcoming atmosphere of the restaurants into a contemporary office environment. Combined with clear floorplans, he developed a design and color concept that ensures people can concentrate and feel inspired when they work there. On the first floor with its communal spaces, highboards and the carpet runner indicate the aisle between the workspaces, while the offices on the top floor are reached via a two-flight staircase and a hallway in the middle.



Even the reception looks more like a boutique hotel than an office. Warm, earthy colors and appealing, open-pore materials create an atmosphere that's attractive in terms of its appearance and acoustics. Lush flower bouquets in exotic vases are a clever style contrast with the traditional office.



The workspaces come in the form of islands for two, three and four people, or as a workbench for up to six co-workers. Highboards and acoustic panels provide privacy and dull any noise. Acoustic curtains and suspended acoustic sails serve as light reflectors and absorb noise.



ON office chairs (design: wiege) were selected to encourage people to engage in three-dimensional movement while working at their computers. The office chair, which has received many awards for its design and ergonomics, provides an elegant accent with its slim silhouette and color-coordinated cover.

Akasaka Intercity Conference Center, Tokyo, Japan Interior: NIHON SEKKEI INC.
Photos: SS Kikaku Inc.

The Akasaka Intercity Air conference center (by Nihon Sekkei architects) is an exceptionally earthquake-proof residential and office building that enhances the urban landscape. The construction project's motto was Next Generation Tokyo and was planned to include a lot of green spaces and to high environmental standards. The multi-award-winning, 32-story high rise is connected to the Akasaka Intercity building complex via a park-like space. In addition to shops, restaurants and cafés, it's home to the Akasaka Intercity Conference Center with 12 meeting rooms, whose interiors were also designed by Nihon Sekkei.



English-speaking personnel, a view of the green spaces and, last but not least, the comfortable, high-quality Graph conference chairs (design: jehs+laub) ensure that guests enjoy being in the rooms.



The chairs in the lobby with their clear forms and firm upholstery are paired with matching side tables from the Asienta range (design: jehs+laub) and invite people to come and talk to others and linger for a while.



We're looking forward to your projects.

Wilkening + Hahne GmbH+Co.KG
Fritz-Hahne-Str. 8
31848 Bad Münster
Germany
Tel.: +49 5042 999 100
contact@wilkhahn.de
www.wilkhahn.com



Creative direction
Rainer Schilling

Design
scherrer.

Concept/Text
Burkhard Remmers

Project management and production
scherrer.

Languages
German, English

© 2020 Wilkhahn
Wilkening + Hahne GmbH+Co. KG
Fritz-Hahne-Straße 8
31848 Bad Münster
Germany

Nominal charge EUR 28

Ramsing & Co | Johannes Wegmann | PEIA ASSOCIATI | insidegroup.lu | Allona Arquitectos |
Meiho Facility Works Limited | OFFCON | Outbox Studio | Obayashi Corporation | Ellwanger, ellwang
Design | FLOOAT, Inc. | Petzi + Petzi | Spatial Concept | Art Nivo | MMoser | Casper Schwarz Archite
Nikken Space Design Ltd. | mph architects | Interior design studio LESON GmbH | Fokkema & Partners Archi
Wackerhagen GmbH & Co. KG | Woods Bagot | Interior Lepel & Lepel | Geyer | Identi AG | Rainer Schilling | C
ON SEKKEI INC. | DWP Design with Purpose | The real estate management team at St. Gallen University | H
Constructlab | Ludwig Hilbersheimer | Ramsing & Co | Johannes Wegmann | PEIA ASSOCIATI | insidegroup.lu
mp architects. | Unispace | Meiho Facility Works Limited | OFFCON | Outbox Studio | Obayashi Corpora
ume | Vega Ortiz | Combine Design | FLOOAT, Inc. | Petzi + Petzi | Spatial Concept | Art Nivo | MMo
mp | CBRE | Nikken Sekkei Ltd., Nikken Space Design Ltd. | mph architects | Interior design studio LESON
rior Solutions | Antje Pegger for Wackerhagen GmbH & Co. KG | Woods Bagot | Interior Lepel & Lepel | Gey
ey Innenarchitektur + Design | NIHON SEKKEI INC. | DWP Design with Purpose | The real estate manag
eam | Sheppard Robson | Phillip Oswald/Constructlab | Ludwig Hilbersheimer | Ramsing & Co | Johannes
estudio arquitectos primitivo gonzález / mmp architects. | Unispace | Meiho Facility Works Limited | OFFCO
AG | Paustian | ebene03.büro für räume | Vega Ortiz | Combine Design | FLOOAT, Inc. | Petzi + Petzi
ct | brüchner-hüttemann pasch bhp | CBRE | Nikken Sekkei Ltd., Nikken Space Design Ltd. | mph architect
esellschaft mbH | Advanced Interior Solutions | Antje Pegger for Wackerhagen GmbH & Co. KG | Woods Ba
eam | Concrete Amsterdam | Axel Frey Innenarchitektur + Design | NIHON SEKKEI INC. | DWP Design with I
ty's real estate management team | Sheppard Robson | Phillip Oswald/Constructlab | Ludwig Hilbersheimer
r partners | Architecture + estudio arquitectos primitivo gonzález / mmp architects. | Unispace | Meiho
itekten ingenieure gmbh | Gehri AG | Paustian | ebene03.büro für räume | Vega Ortiz | Combine Design |
e Bruyn, two_space + product | brüchner-hüttemann pasch bhp | CBRE | Nikken Sekkei Ltd., Nikken Space D
chitekten und Planungsgesellschaft mbH | Advanced Interior Solutions | Antje Pegger for Wackerhagen GmbH
ternal design team | Concrete Amsterdam | Axel Frey Innenarchitektur + Design | NIHON SEKKEI INC. |
n | Leibniz University's real estate management team | Sheppard Robson | Phillip Oswald/Constructlab |
uitectos | Captif | blocher partners | Architecture + estudio arquitectos primitivo gonzález / mmp architect
llwanger menzel architekten ingenieure gmbh | Gehri AG | Paustian | ebene03.büro für räume | Vega Ortiz
chitects | Claudia de Bruyn, two_space + product | brüchner-hüttemann pasch bhp | CBRE | Nikken Sekke
rchitekten | struhk architekten und Planungsgesellschaft mbH | Advanced Interior Solutions | Antje Pegge
ng | Gerald Kolm | Hafven, internal design team | Concrete Amsterdam | Axel Frey Innenarchitektur + Des
ty | Herzog & de Meuron | Leibniz University's real estate management team | Sheppard Robson | Phillip O
roup.lu | Allona Arquitectos | Captif | blocher partners | Architecture + estudio arquitectos primitivo go
poration | Ellwanger, ellwanger menzel architekten ingenieure gmbh | Gehri AG | Paustian | ebene03.büro
r | Casper Schwarz Architects | Claudia de Bruyn, two_space + product | brüchner-hüttemann pasch bhp
mbH | Fokkema & Partners Architekten | struhk architekten und Planungsgesellschaft mbH | Advanced Inte
r | Identi AG | Rainer Schilling | Gerald Kolm | Hafven, internal design team | Concrete Amsterdam | Axe
ent team at St. Gallen University | Herzog & de Meuron | Leibniz University's real estate management team
ann | PEIA ASSOCIATI | insidegroup.lu | Allona Arquitectos | Captif | blocher partners | Architecture +
ON | Outbox Studio | Obayashi Corporation | Ellwanger, ellwanger menzel architekten ingenieure gmbh |
 | Spatial Concept | Art Nivo | MMoser | Casper Schwarz Architects | Claudia de Bruyn, two_space + pro
cts | Interior design studio LESON GmbH | Fokkema & Partners Architekten | struhk architekten und Plan
bagot | Interior Lepel & Lepel | Geyer | Identi AG | Rainer Schilling | Gerald Kolm | Hafven, internal design
urpose | The real estate management team at St. Gallen University | Herzog & de Meuron | Leibniz Uni
heimer | Ramsing & Co | Johannes Wegmann | PEIA ASSOCIATI | insidegroup.lu | Allona Arquitectos | Ca
ace | Meiho Facility Works Limited | OFFCON | Outbox Studio | Obayashi Corporation | Ellwanger, ellwang
ne Design | FLOOAT, Inc. | Petzi + Petzi | Spatial Concept | Art Nivo | MMoser | Casper Schwarz Archite
nikken Space Design Ltd. | mph architects | Interior design studio LESON GmbH | Fokkema & Partners Archi
Wackerhagen GmbH & Co. KG | Woods Bagot | Interior Lepel & Lepel | Geyer | Identi AG | Rainer Schilling | C
ON SEKKEI INC. | DWP Design with Purpose | The real estate management team at St. Gallen University | H
Constructlab | Ludwig Hilbersheimer | Ramsing & Co | Johannes Wegmann | PEIA ASSOCIATI | insidegroup.lu
mp architects. | Unispace | Meiho Facility Works Limited | OFFCON | Outbox Studio | Obayashi Corpora
ume | Vega Ortiz | Combine Design | FLOOAT, Inc. | Petzi + Petzi | Spatial Concept | Art Nivo | MMo
mp | CBRE | Nikken Sekkei Ltd., Nikken Space Design Ltd. | mph architects | Interior design studio LESON
rior Solutions | Antje Pegger for Wackerhagen GmbH & Co. KG | Woods Bagot | Interior Lepel & Lepel | Gey
ey Innenarchitektur + Design | NIHON SEKKEI INC. | DWP Design with Purpose | The real estate manag
eam | Sheppard Robson | Phillip Oswald/Constructlab | Ludwig Hilbersheimer | Ramsing & Co | Johannes V
estudio arquitectos primitivo gonzález / mmp architects. | Unispace | Meiho Facility Works Limited | OFFCO
AG | Paustian | ebene03.büro für räume | Vega Ortiz | Combine Design | FLOOAT, Inc. | Petzi + Petzi |
ct | brüchner-hüttemann pasch bhp | CBRE | Nikken Sekkei Ltd., Nikken Space Design Ltd. | mph architect
esellschaft mbH | Advanced Interior Solutions | Antje Pegger for Wackerhagen GmbH & Co. KG | Woods Ba
eam | Concrete Amsterdam | Axel Frey Innenarchitektur + Design | NIHON SEKKEI INC. | DWP Design with I
ty's real estate management team | Sheppard Robson | Phillip Oswald/Constructlab | Ludwig Hilbersheimer
r partners | Architecture + estudio arquitectos primitivo gonzález / mmp architects. | Unispace | Meiho
itekten ingenieure gmbh | Gehri AG | Paustian | ebene03.büro für räume | Vega Ortiz | Combine Design |
e Bruyn, two_space + product | brüchner-hüttemann pasch bhp | CBRE | Nikken Sekkei Ltd., Nikken Space D
chitekten und Planungsgesellschaft mbH | Advanced Interior Solutions | Antje Pegger for Wackerhagen GmbH
ternal design team | Concrete Amsterdam | Axel Frey Innenarchitektur + Design | NIHON SEKKEI INC. |
n | Leibniz University's real estate management team | Sheppard Robson | Phillip Oswald/Constructlab |
uitectos | Captif | blocher partners | Architecture + estudio arquitectos primitivo gonzález / mmp architect
llwanger menzel architekten ingenieure gmbh | Gehri AG | Paustian | ebene03.büro für räume | Vega Ortiz
chitects | Claudia de Bruyn, two_space + product | brüchner-hüttemann pasch bhp | CBRE | Nikken Sekke
rchitekten | struhk architekten und Planungsgesellschaft mbH | Advanced Interior Solutions | Antje Pegge
ng | Gerald Kolm | Hafven, internal design team | Concrete Amsterdam | Axel Frey Innenarchitektur + Des
ty | Herzog & de Meuron | Leibniz University's real estate management team | Sheppard Robson | Phillip O
roup.lu | Allona Arquitectos | Captif | blocher partners | Architecture + estudio arquitectos primitivo go
poration | Ellwanger, ellwanger menzel architekten ingenieure gmbh | Gehri AG | Paustian | ebene03.büro

er menzel architekten ingenieure gmbh | Gehri AG | Paustian | ebene03.büro für räume | Vega Ortiz | Con
cts | Claudia de Bruyn, two_space + product | brüchner-hüttemann pasch bhp | CBRE | Nikken Sekkei Ltd
tecten | struhk architekten und Planungsgesellschaft mbH | Advanced Interior Solutions | Antje Pegger f
Gerald Kolm | Hafven, internal design team | Concrete Amsterdam | Axel Frey Innenarchitektur + Design | N
Herzog & de Meuron | Leibniz University's real estate management team | Sheppard Robson | Phillip Oswa
u | Allona Arquitectos | Captif | blocher partners | Architecture + estudio arquitectos primitivo gonzález
tion | Ellwanger, ellwanger menzel architekten ingenieure gmbh | Gehri AG | Paustian | ebene03.büro f
ser | Casper Schwarz Architects | Claudia de Bruyn, two_space + product | brüchner-hüttemann pas
GmbH | Fokkema & Partners Architecten | struhk architekten und Planungsgesellschaft mbH | Advanced In
er | Identi AG | Rainer Schilling | Gerald Kolm | Hafven, internal design team | Concrete Amsterdam | Ax
ement team at St. Gallen University | Herzog & de Meuron | Leibniz University's real estate managemen
Wegmann | PEIA ASSOCIATI | insidegroup.lu | Allona Arquitectos | Captif | blocher partners | Architectu
DN | Outbox Studio | Obayashi Corporation | Ellwanger, ellwanger menzel architekten ingenieure gmbh | Ge
Spatial Concept | Art Nivo | MMoser | Casper Schwarz Architects | Claudia de Bruyn, two_space + pro
s | Interior design studio LESON GmbH | Fokkema & Partners Architecten | struhk architekten und Planung
got | Interior Lepel & Lepel | Geyer | Identi AG | Rainer Schilling | Gerald Kolm | Hafven, internal design
Purpose | The real estate management team at St. Gallen University | Herzog & de Meuron | Leibniz Unive
| Ramsing & Co | Johannes Wegmann | PEIA ASSOCIATI | insidegroup.lu | Allona Arquitectos | Captif | bloc
Facility Works Limited | OFFCON | Outbox Studio | Obayashi Corporation | Ellwanger, ellwanger menzel a
FLOOAT, Inc. | Petzi + Petzi | Spatial Concept | Art Nivo | MMoser | Casper Schwarz Architects | Claud
Design Ltd. | mph architects | Interior design studio LESON GmbH | Fokkema & Partners Architecten | struh
& Co. KG | Woods Bagot | Interior Lepel & Lepel | Geyer | Identi AG | Rainer Schilling | Gerald Kolm | Hafve
DWP Design with Purpose | The real estate management team at St. Gallen University | Herzog & de Me
Ludwig Hilbersheimer | Ramsing & Co | Johannes Wegmann | PEIA ASSOCIATI | insidegroup.lu | Allona A
ts. | Unispace | Meiho Facility Works Limited | OFFCON | Outbox Studio | Obayashi Corporation | Ellwange
z | Combine Design | FLOOAT, Inc. | Petzi + Petzi | Spatial Concept | Art Nivo | MMoser | Casper Schwa
i Ltd., Nikken Space Design Ltd. | mph architects | Interior design studio LESON GmbH | Fokkema & Partne
r for Wackerhagen GmbH & Co. KG | Woods Bagot | Interior Lepel & Lepel | Geyer | Identi AG | Rainer Schi
ign | NIHON SEKKEI INC. | DWP Design with Purpose | The real estate management team at St. Gallen Unive
swalt/Constructlab | Ludwig Hilbersheimer | Ramsing & Co | Johannes Wegmann | PEIA ASSOCIATI | insid
onzález / mmp architects. | Unispace | Meiho Facility Works Limited | OFFCON | Outbox Studio | Obayas
für räume | Vega Ortiz | Combine Design | FLOOAT, Inc. | Petzi + Petzi | Spatial Concept | Art Nivo | MMo
p | CBRE | Nikken Sekkei Ltd., Nikken Space Design Ltd. | mph architects | Interior design studio LESO
erior Solutions | Antje Pegger for Wackerhagen GmbH & Co. KG | Woods Bagot | Interior Lepel & Lepel | Ge
l Frey Innenarchitektur + Design | NIHON SEKKEI INC. | DWP Design with Purpose | The real estate manag
n | Sheppard Robson | Phillip Oswalt/Constructlab | Ludwig Hilbersheimer | Ramsing & Co | Johannes We
estudio arquitectos primitivo gonzález / mmp architects. | Unispace | Meiho Facility Works Limited | OF
Gehri AG | Paustian | ebene03.büro für räume | Vega Ortiz | Combine Design | FLOOAT, Inc. | Petzi + Pe
oduct | brüchner-hüttemann pasch bhp | CBRE | Nikken Sekkei Ltd., Nikken Space Design Ltd. | mph arch
ungsgesellschaft mbH | Advanced Interior Solutions | Antje Pegger for Wackerhagen GmbH & Co. KG | Woo
n team | Concrete Amsterdam | Axel Frey Innenarchitektur + Design | NIHON SEKKEI INC. | DWP Design wit
iversity's real estate management team | Sheppard Robson | Phillip Oswalt/Constructlab | Ludwig Hilbe
Captif | blocher partners | Architecture + estudio arquitectos primitivo gonzález / mmp architects. | Uni
er menzel architekten ingenieure gmbh | Gehri AG | Paustian | ebene03.büro für räume | Vega Ortiz | Con
cts | Claudia de Bruyn, two_space + product | brüchner-hüttemann pasch bhp | CBRE | Nikken Sekkei Ltd
tecten | struhk architekten und Planungsgesellschaft mbH | Advanced Interior Solutions | Antje Pegger f
Gerald Kolm | Hafven, internal design team | Concrete Amsterdam | Axel Frey Innenarchitektur + Design | N
Herzog & de Meuron | Leibniz University's real estate management team | Sheppard Robson | Phillip Oswa
u | Allona Arquitectos | Captif | blocher partners | Architecture + estudio arquitectos primitivo gonzález
tion | Ellwanger, ellwanger menzel architekten ingenieure gmbh | Gehri AG | Paustian | ebene03.büro f
ser | Casper Schwarz Architects | Claudia de Bruyn, two_space + product | brüchner-hüttemann pas
GmbH | Fokkema & Partners Architecten | struhk architekten und Planungsgesellschaft mbH | Advanced In
er | Identi AG | Rainer Schilling | Gerald Kolm | Hafven, internal design team | Concrete Amsterdam | Ax
ement team at St. Gallen University | Herzog & de Meuron | Leibniz University's real estate managemen
Wegmann | PEIA ASSOCIATI | insidegroup.lu | Allona Arquitectos | Captif | blocher partners | Architectu
DN | Outbox Studio | Obayashi Corporation | Ellwanger, ellwanger menzel architekten ingenieure gmbh | Ge
Spatial Concept | Art Nivo | MMoser | Casper Schwarz Architects | Claudia de Bruyn, two_space + pro
s | Interior design studio LESON GmbH | Fokkema & Partners Architecten | struhk architekten und Planung
got | Interior Lepel & Lepel | Geyer | Identi AG | Rainer Schilling | Gerald Kolm | Hafven, internal design
Purpose | The real estate management team at St. Gallen University | Herzog & de Meuron | Leibniz Unive
| Ramsing & Co | Johannes Wegmann | PEIA ASSOCIATI | insidegroup.lu | Allona Arquitectos | Captif | bloc
Facility Works Limited | OFFCON | Outbox Studio | Obayashi Corporation | Ellwanger, ellwanger menzel a
FLOOAT, Inc. | Petzi + Petzi | Spatial Concept | Art Nivo | MMoser | Casper Schwarz Architects | Claud
Design Ltd. | mph architects | Interior design studio LESON GmbH | Fokkema & Partners Architecten | struh
& Co. KG | Woods Bagot | Interior Lepel & Lepel | Geyer | Identi AG | Rainer Schilling | Gerald Kolm | Hafve
DWP Design with Purpose | The real estate management team at St. Gallen University | Herzog & de Me
Ludwig Hilbersheimer | Ramsing & Co | Johannes Wegmann | PEIA ASSOCIATI | insidegroup.lu | Allona A
ts. | Unispace | Meiho Facility Works Limited | OFFCON | Outbox Studio | Obayashi Corporation | Ellwange
z | Combine Design | FLOOAT, Inc. | Petzi + Petzi | Spatial Concept | Art Nivo | MMoser | Casper Schwa
i Ltd., Nikken Space Design Ltd. | mph architects | Interior design studio LESON GmbH | Fokkema & Partne
r for Wackerhagen GmbH & Co. KG | Woods Bagot | Interior Lepel & Lepel | Geyer | Identi AG | Rainer Schi
ign | NIHON SEKKEI INC. | DWP Design with Purpose | The real estate management team at St. Gallen Unive
swalt/Constructlab | Ludwig Hilbersheimer | Ramsing & Co | Johannes Wegmann | PEIA ASSOCIATI | insid
onzález / mmp architects. | Unispace | Meiho Facility Works Limited | OFFCON | Outbox Studio | Obayas
für räume | Vega Ortiz | Combine Design | FLOOAT, Inc. | Petzi + Petzi | Spatial Concept | Art Nivo | MMo

